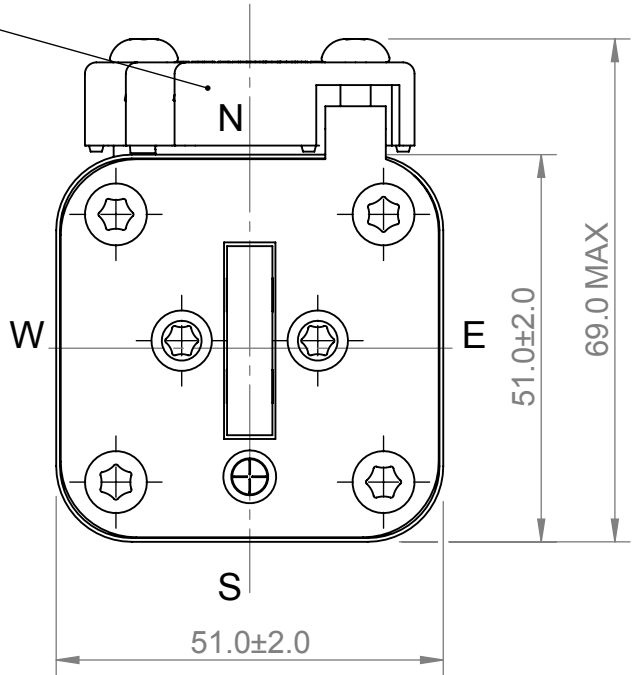
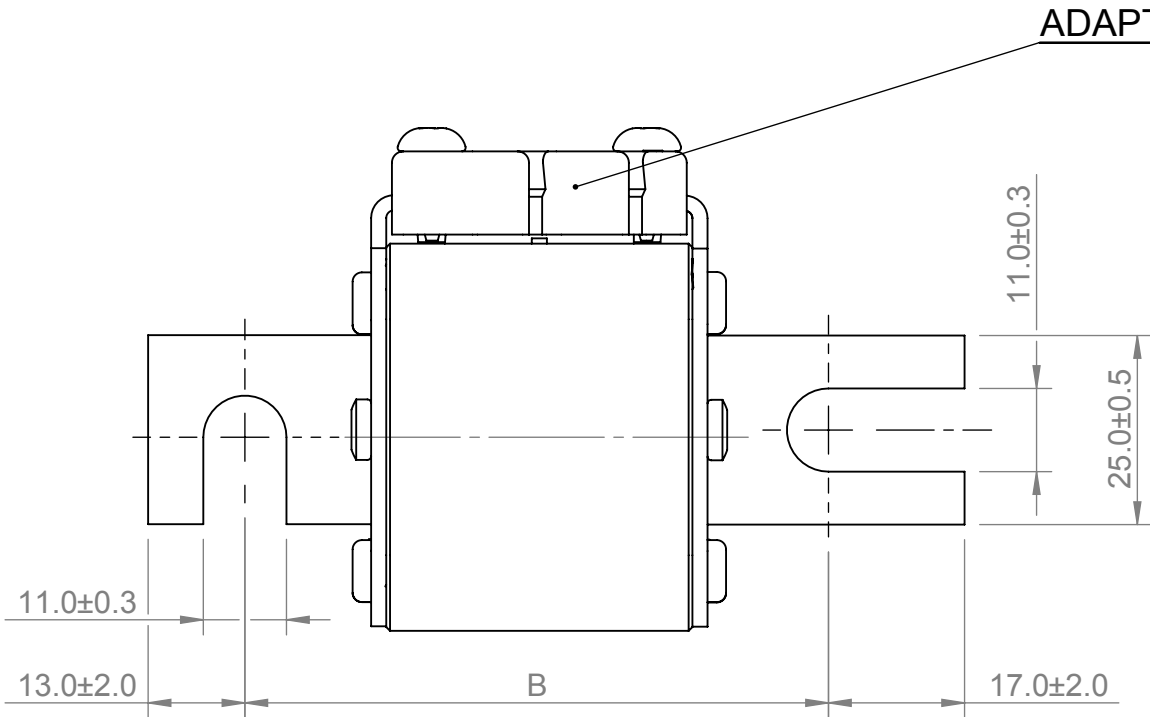
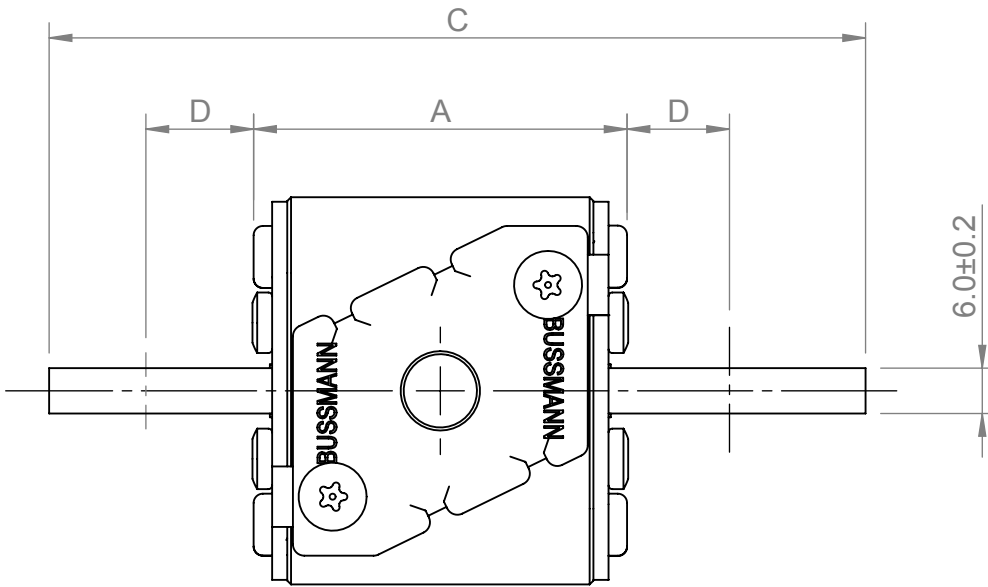


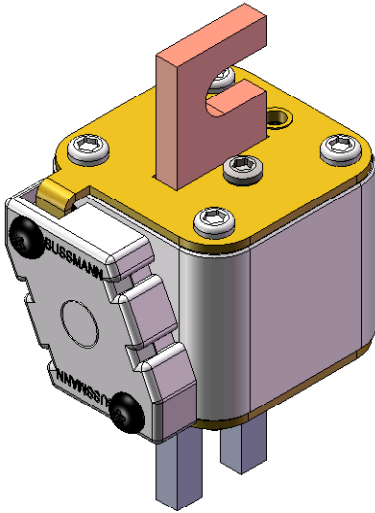
REVISION				
REV	DESCRIPTION	BY	DATE	CHANGE NO.
B	Change dim. of the "B" on pos. 2 & 3	ZSZ	24/08/11	H0354




The normal position of the indicator is as shown position N.
Position S,E and W on request only.



POS	TYPE	A mm	B mm	C mm	D mm	SUITABLE ADAPTOR
1	1K/80	49.6 ± 1.2	77.7 ± 1.4	108.5 ± 1.8	14.0 ± 2.0	170H0066
2	1K/110	49.6 ± 1.2	108.0 ± 1.8	138.5 ± 2.0	29.0 ± 2.0	170H0066
3	1K/110	79.5 ± 1.4	108.0 ± 1.8	138.5 ± 2.0	14.0 ± 2.0	170H0067
4	1K/140	79.5 ± 1.4	138.0 ± 2.0	168.0 ± 2.5	29.0 ± 2.0	170H0067



MODEL VERSION: 00	MATERIAL:	UNLESS OTHERWISE SPECIFIED, ALL DIMENSIONS ARE IN MILLIMETERS.		 COOPER Bussmann COOPER Bussmann (UK) Ltd Burton-on-the-Wolds, Leics, LE12 5TH Tel +44 1509 882 600 Fax +44 1509 882786										
	VARIOUS	TOLERANCES UNLESS OTHERWISE SPECIFIED: GENERAL ± 0.2mm ANGULAR ± 1°												
	FINISH:	UNCONTROLLED COPY		TITLE: HIGH SPEED FUSES SIZE 1 ACC. TO DIN 43653										
	NONE	THIS DRAWING IS CONFIDENTIAL AND THE COPYRIGHT OF COOPER BUSSMANN AND MUST NOT BE COPIED OR PASSED ON TO A THIRD PARTY WITHOUT WRITTEN CONSENT												
	SURFACE AREA: VARIOUSmm ²													
MODEL SOURCE FILE: U0023	VOLUME: 86829.23mm ³			DWG NO:		170X0335		ANGLE:	FIRST	REV:	B			
	MASS: 216.93g			DRAWN BY:	KVS	CHECKED BY:	TJ	DATE:	07/05/2010	SCALE:	1:1	SIZE:	A3	SHEET: