

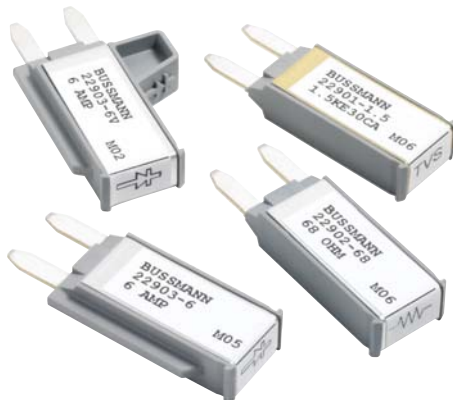
# Vehicle Electrical Center (VEC) components

Powering Business Worldwide

## Series 229 Diode, Resistor, and Transorb

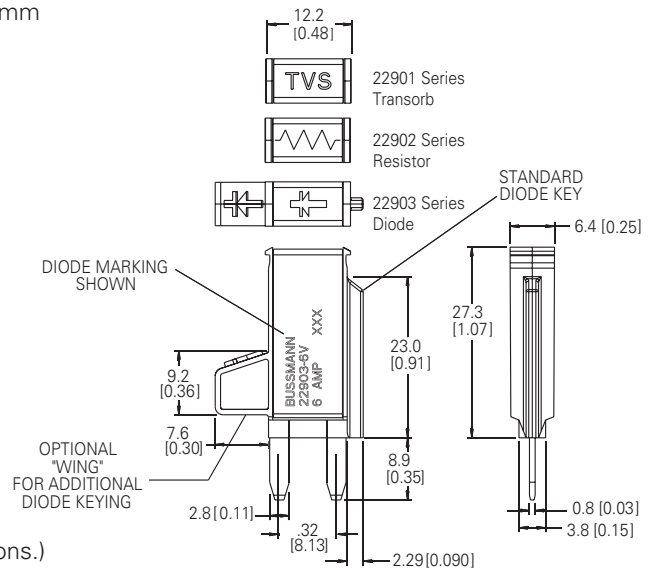
### Specifications

**Ratings:** Consult factory for available ratings and part numbers  
**Materials:** Grey 94V0 thermoplastic housing with metal cover.  
**Termination Type:** Compatible with 280 Type fuse blocks using 8.1mm centerline.  
**Diode Key Feature:** Standard key denotes installation direction. Extended key available for error-proof installation in VEC.



### Dimensions - mm(in)

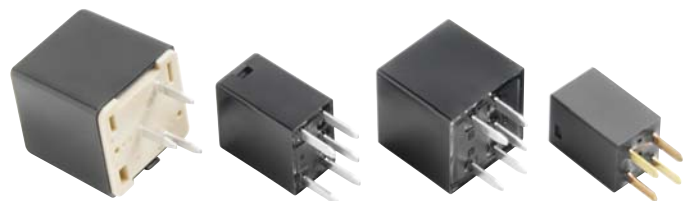
(Dims. shown are for reference only. Consult factory for latest prints)



**Relays** (Only Available for VEC, DVEC, RFRM, or RTMR Applications.)

### Specifications

**Types:** 5-pin mini-relay, 12Vdc & 24Vdc  
 5-pin micro-relay, 12Vdc & 24Vdc  
 4-pin mini-micro relay, 12Vdc  
 Consult Factory for available amperage ratings  
**Termination Type:** Compatible with 280 Type fuse blocks using 8.1mm centerline.  
 Sealed versions of some relays also available.



## VEC Accessories

### DVEC Cover Tether

Tether available for use with Series 32000 DVEC cover. Consult factory.



### Series 32011BS (Input Connector Cap) & Series 32012BS (Output Connector Cap)

Connector caps can be assembled to the mating VEC harness connectors (Series 32004 & 32006) when not in use.



### Series B109-7031 (for use with Series 32000 DVEC)

External bus bar can be used with the Dual VEC to bus together studded power inputs.