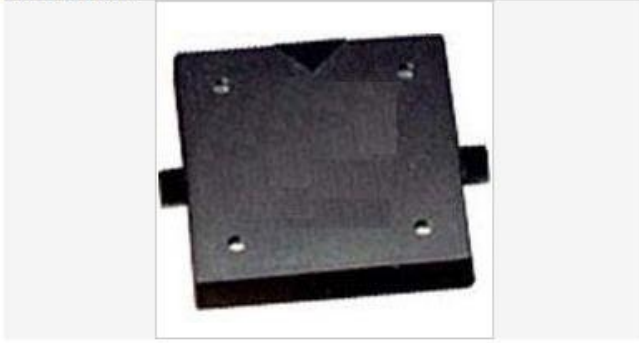
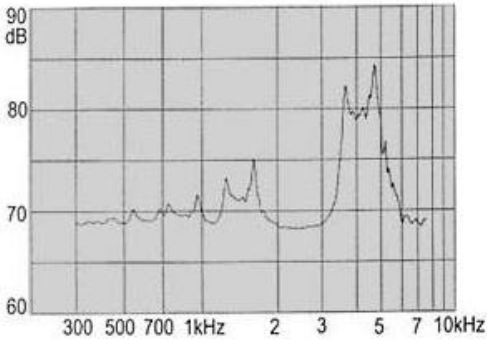
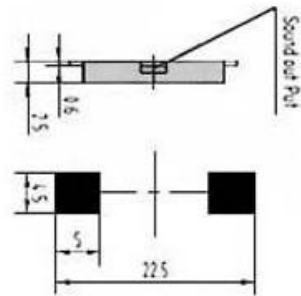
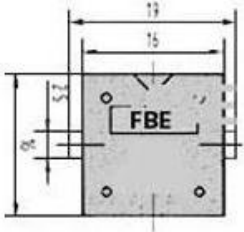


Product Info ...



Type: FBSB1640  
 Product Name: SMD External-Driven Piezo Transducer  
 Description: China SMT Buzzer manufacturer FBSB1640, FBELE Brand,



allowable Input Voltage	20Vp-p
Max. Consumption	3.0mA / 4.0kHz / 5Vp-p Square Wave
Capacitance at 1000Hz	14 [ ] 30nF
Min. Sound Pressure Level	70dB/4.0kHz / 5Vp-p Square Wave / 10cm
Resonant Frequency	4.0 [ ] 0.5KHZ
Operating Temperature	-20 ~ +70 °C
Case Material	PPS
Weight	0.9g