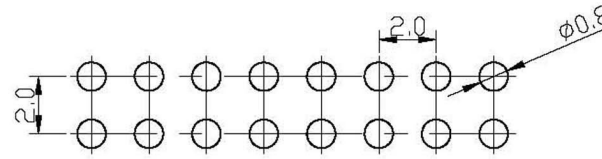
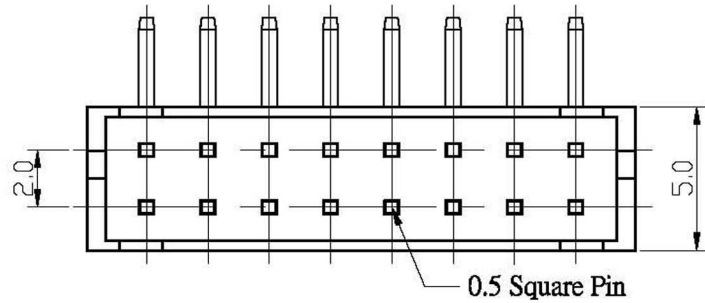


Kcr PAWR2103-XXx2



RECOMMENDED P.C.BOARD HOLE DIMM.

SPECIFICATIONS

Electrical

Current Rating: 2A AC DC

Voltage Rating: 250V AC, DC

Operating Temp.: -25°C ~ +85°C

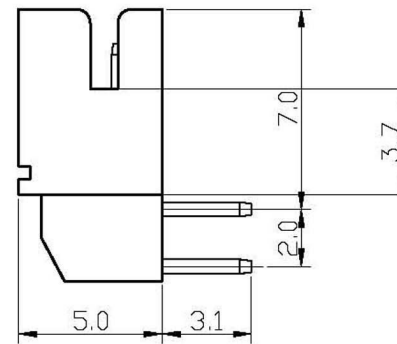
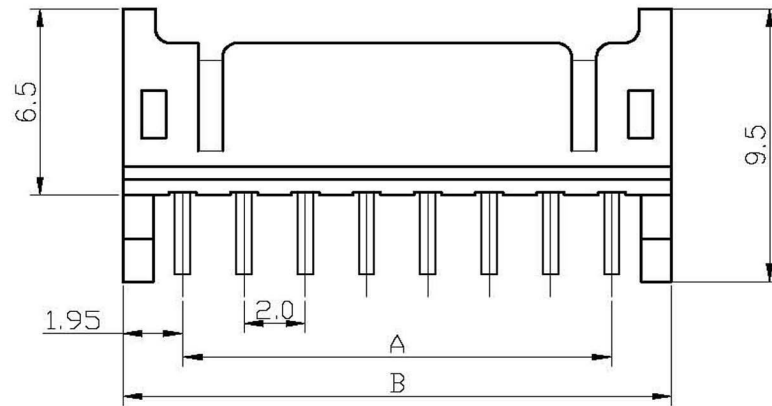
Contact Resistance: 20mΩ / Max.

Insulation Resistance: 1000MΩ / Min.

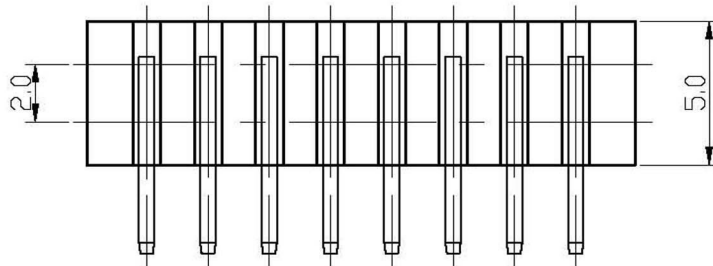
Material

Terminal Material: Brass/ Tin-plated/ Gold-plated

Material: Nylon 66, UL 94V-0+GF



| Poles | Dimension mm (in.) | | Note. |
|-------|--------------------|------|-------|
| | A | B | |
| 4 | 2.0 | 6.0 | |
| 6 | 4.0 | 8.0 | |
| 8 | 6.0 | 10.0 | |
| 10 | 8.0 | 12.0 | |
| 12 | 10.0 | 14.0 | |
| 14 | 12.0 | 16.0 | |
| 16 | 14.0 | 18.0 | |
| 18 | 16.0 | 20.0 | |
| 20 | 18.0 | 22.0 | |
| 22 | 20.0 | 24.0 | |
| 24 | 22.0 | 26.0 | |
| 26 | 24.0 | 28.0 | |
| 28 | 26.0 | 30.0 | |
| 30 | 28.0 | 32.0 | |
| 32 | 30.0 | 34.0 | |
| 34 | 32.0 | 36.0 | |
| 40 | 38.0 | 42.0 | |



RoHS
Compliant

SEMIC
TRADE

SEMIC TRADE, s.r.o.

Volutová 2521/18

158 00 Praha 5

Czech Republic

www.semic.cz

semic@semic.cz

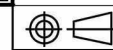
tel.: +420 251 625 331, 332, 377

fax: +420 251 626 252, 393

APPD.
核准 BETTY

DWG.
製圖 BETTY

DATE 制表日
2008/08/19



SCALE
比例 參考

UNIT
單位 M M

PAGE
張數 1 OF 1

TOLERANCE
容許公差
.0 ±0.35
.00 ±0.25
ANG. ±

SIZE
紙張尺寸 A 4

REV.
版次 A

PART NAME 品名

JST PHD 2.0mm WAFER 2XXXP DUAL ROW

RIGHT ANGLE WHITE INSULATOR ROHS LOW-LEAD

PART NO.

料號 W2103-XXPDRXXWR