

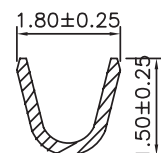
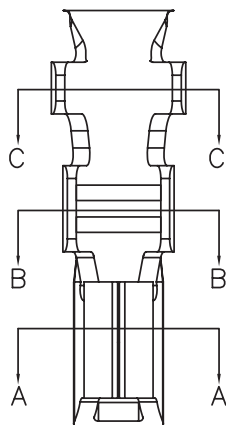
1

2

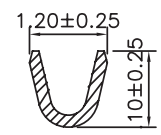
3

4

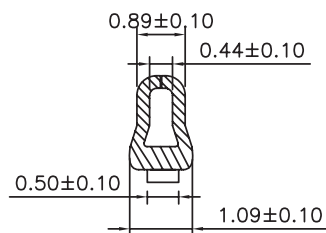
5



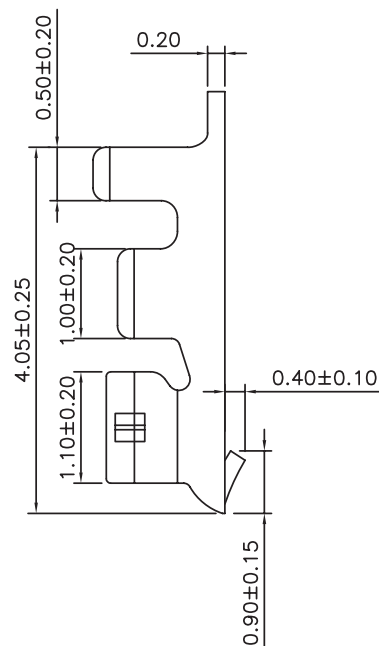
Sections:C-C



Sections:B-B



Sections:A-A



## TECHNICAL CHARACTERISTICS

## MATERIAL

CONTACT MATERIAL: COPPER ALLOY  
 CONTACT TYPE: STAMPED  
 CONTACT PLATING: TIN  
 QUALITY CLASS: 25 MATING CYCLES  
 PITCH: FOR 1.50MM

## ENVIRONMENTAL

OPERATING TEMPERATURE: -25 UP TO 85°C  
 COMPLIANCE: LEAD FREE AND ROHS

## ELECTRICAL

CURRENT RATING: 1A  
 WORKING VOLTAGE: 50V AC  
 CONTACT RESISTANCE: 20 mOHM MAX

## WIRE DIMENSION

AWG: AWG 28 - 30

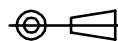
## PACKAGING

BULK/LOOSE DELIVERY IN A BAG  
 EACH TERMINAL SEPARATED FROM EACH OTHER  
 NOT ON A REEL  
 100PCS/PER BAG. MULTIPLE OF 100PCS ONLY  
 1PC OF 64800113722DEC=1 CRIMP TERMINAL  
 SO 1 BAG MEANS 100 PCS OF 64800113722DEC

Kcr KONTAKT-PXH1500 Sn &amp;WE

RoHS Compliant

PROJECTION:



GENERAL TOLERANCE

.X =  $\pm 0.2$ .XX =  $\pm 0.15$ 

**SEMIC**  
 TRADE

SEMIC TRADE, s.r.o.

Volutová 2521/18

158 00 Praha 5

Czech Republic

[www.semic.cz](http://www.semic.cz)[semic@semic.cz](mailto:semic@semic.cz)

tel.: +420 251 625 331, 332, 377

fax: +420 251 626 252, 393

APPROVAL: RJ

UNIT: MM

SCALE:

SHEET: 1/1

DRAW: MIKE

DESCRIPTION: 1.50 MM FEMALE CRIMP TERMINAL

WERI PART NO: 64800113722DEC

SIZE

**A4**

G			
F			
E			
D			
C			
B	07-AUG-13	CHARACTERISTIC	QL
A	12-MAY-10	PDF	JP
REV	DATE	FILE	BY

# Mouser Electronics

Authorized Distributor

Click to View Pricing, Inventory, Delivery & Lifecycle Information:

[Wurth Electronics:](#)

[64800113722DEC](#)