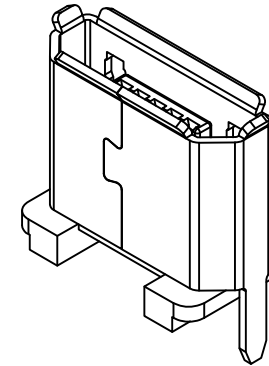


Designed to comply with physical, electrical and environmental requirements of Micro USB Standard (USB2.0)



#### Specifications 规格:

#### Materials 材料:

Plastic Housing 塑胶外壳: LCP, UL94V-0, Black (黑色)  
Contact Terminal 接触端子: Copper Alloy 铜合金.  
Metallic Shell 金属外壳: Stainless Steel 不锈钢 T=0.25mm.

#### Plating 电镀:

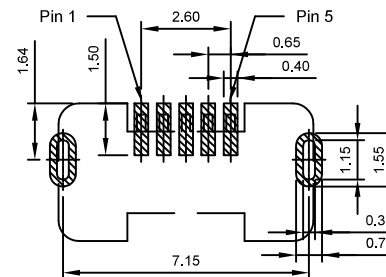
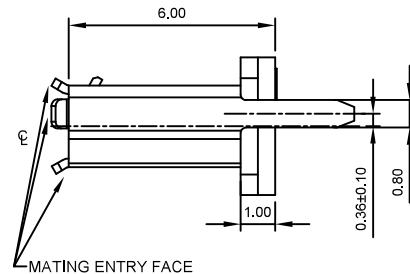
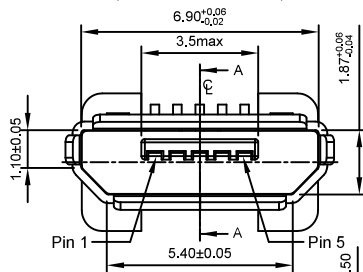
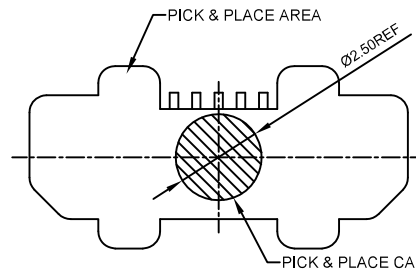
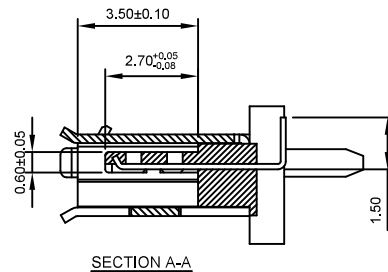
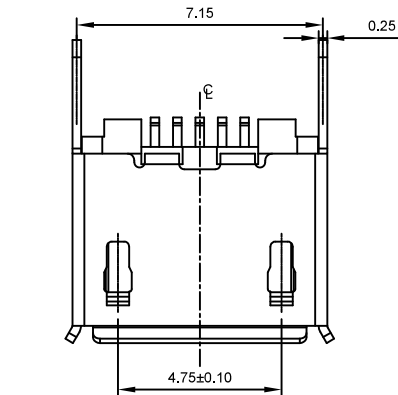
Underplating 底层电镀: 50μ" Nickel, 50μ" 镍  
Finish 表面处理: Contact Area 接触面积: 30μ" Gold plating (镀金)  
Solder Tails 焊接末端: Gold Flash 镀金  
Metallic Shell 金属外壳: Matte Tin 雾锡

#### Electrical 电气规格:

Voltage Rating 电压额定值: 100 V AC  
Current Rating 电流额定值: Signal (Pins 2,3,4) 信号: 1.0 A.  
Power (Pins 1,5) 电源: 1.8A.  
Operating Temperature 工作温度: -30°C to +85°C.  
Contact Resistance 接触电阻值: 30mΩ Max.  
Insulating Resistance 绝缘电阻值: 1000MΩ Min.  
Dielectric Withstand Voltage 耐电压: 500V AC/Minute

#### Mechanical 机械性规格:

Mating Force 插入力: 35N Max.  
Unmating Force 拔出力: 8N Min.  $\Delta$   
Durability 耐久性: 10,000 Cycles 次插拔



RECOMMENDED P.C.B LAYOUT  
GENERAL TOLERANCE: ±0.05  
AS VIEWED FROM COMPONENT SIDE  
☒ Solder Area  
☐ Component Outline

#### Ordering Grid

USB3140 - 30 - XXXX - X - C REQUEST SAMPLES AND QUOTATION

Contact Plating  
30 = 30μ" Gold

Shell Stake Length "S"  
0170 = 1.70mm (for 1.00mm PCB)  
0230 = 2.30mm (for 1.60mm PCB)

Packing Options  
C = Tape & Reel with Cap  
(500 per reel)

Mating Entry Face  
1 = With Mating Entry Face (Standard)  
0 = Without Mating Entry Face



Semic Trade, s.r.o., Volutová 2521/18, 158 00 Praha 5  
Telephone: +420 251 625 331, 251 625 332, 251 625 377  
GSM: +420 605 999 994 Fax: +420 251 626 252, 251 626 393



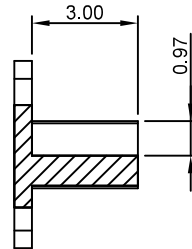
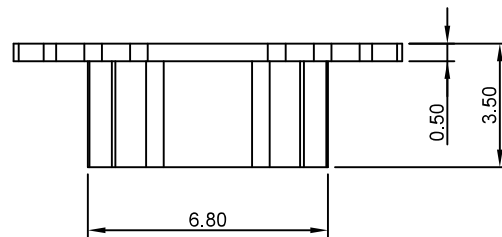
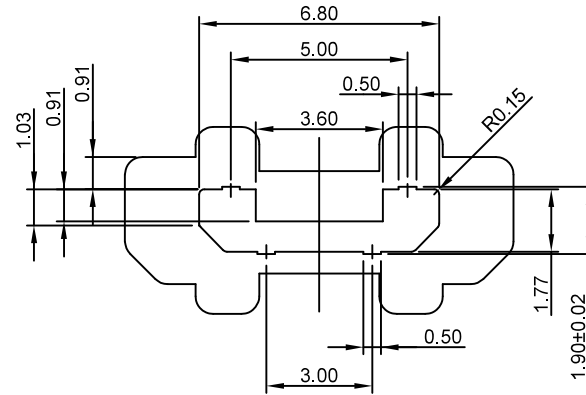
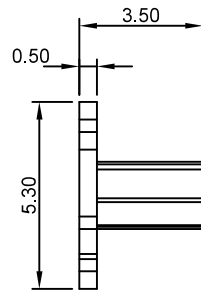
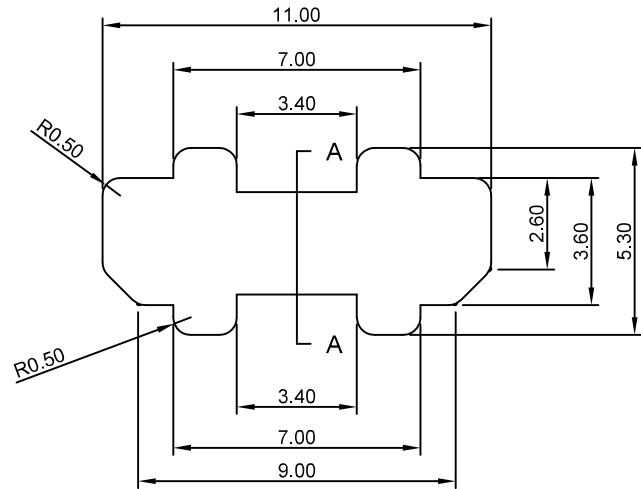
www.semic.cz  
semic@semic.cz

By	AJO	ASE
DETAIL	DRAWING RELEASE	UNMATING FORCE CHANGE
REV	A	B
DATE	02/04/13	28/05/13

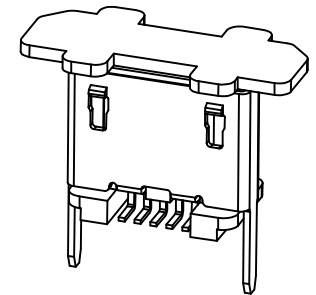
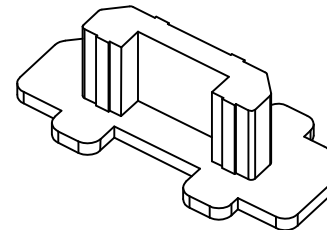


Tolerances (Except as noted)		Part Number:-	Date:-
Dimensions in mm		USB3140	02 APR 13
Description:-		μ USB RECEPTACLE, TYPE B, SURFACE MOUNT, VERTICAL, WITH THRU HOLE SHELL STAKES	
THIS DRAWING IS CONFIDENTIAL AND MUST NOT BE COPIED OR DISCLOSED WITHOUT WRITTEN CONSENT		Scale	Revision
Third Angle Projection		NTS	B
		Material	Drawn by
		See Note	AJO
		E & OE	Sheet No.
			1/3

# Global Connector Technology Ltd. - USB3140: $\mu$ USB Receptacle, Type B, Surface Mount, Vertical, With Through Hole Shell Stakes



SECTION A-A



## Notes:

Material: LCP+30%GF, UL94-V0, Color: Black  
 Burrs: Unless otherwise specified 0.05mm Max.  
 Cavity mark, mold mark, height 0.2mm Max.

Pre-reflow solder process cap may be tight and difficult to remove by hand.  
 Post-reflow cap may be easily removed.

By	AJO	ASE
DETAIL	DRAWING RELEASE	UNMATING FORCE CHANGE
REV	A	B
DATE	02/04/13	28/05/13

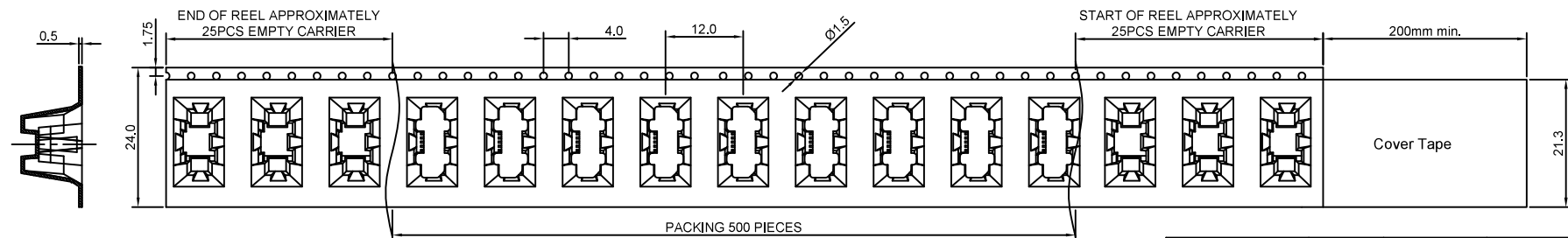


Tolerances (Except as noted)	
Dimensions in mm	
X.X ± 0.10	X.X° ± 2°
X.XX ± 0.05	X.XX° ± 1°
X.XXX ± 0.03	X.XXX° ± 0.5°
Third Angle Projection	

Part Number:-	USB3140	Date:-	02 APR 13
Description:-			
$\mu$ USB RECEPTACLE, TYPE B, SURFACE MOUNT, VERTICAL, WITH THRU HOLE SHELL STAKES			
© THIS DRAWING IS CONFIDENTIAL AND MUST NOT BE COPIED OR DISCLOSED WITHOUT WRITTEN CONSENT			

Scale	Revision	Material	Drawn by	E & OE	Sheet No.
NTS	B	See Note	AJO		2/3

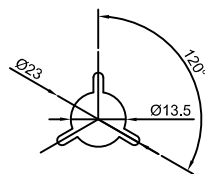
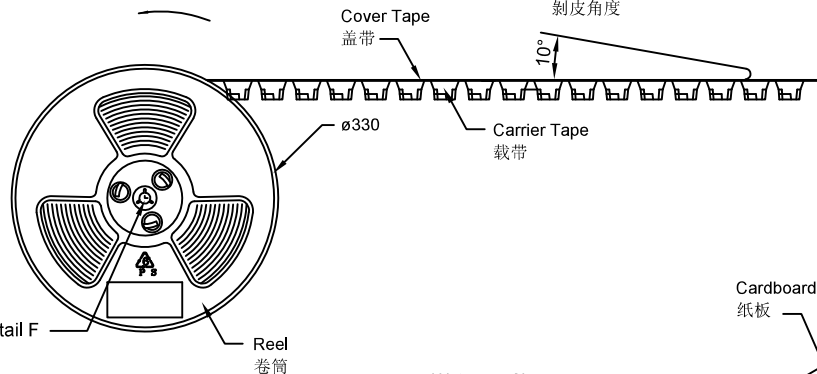
# Global Connector Technology Ltd. - USB3140: $\mu$ USB Receptacle, Type B, Surface Mount, Vertical, With Through Hole Shell Stakes



Products P/N	PCS/Reel	Reels/Carton	PCS/Carton
USB3140	500	3	1500

I/O Direction  
卷盤繞逆時針方向轉動

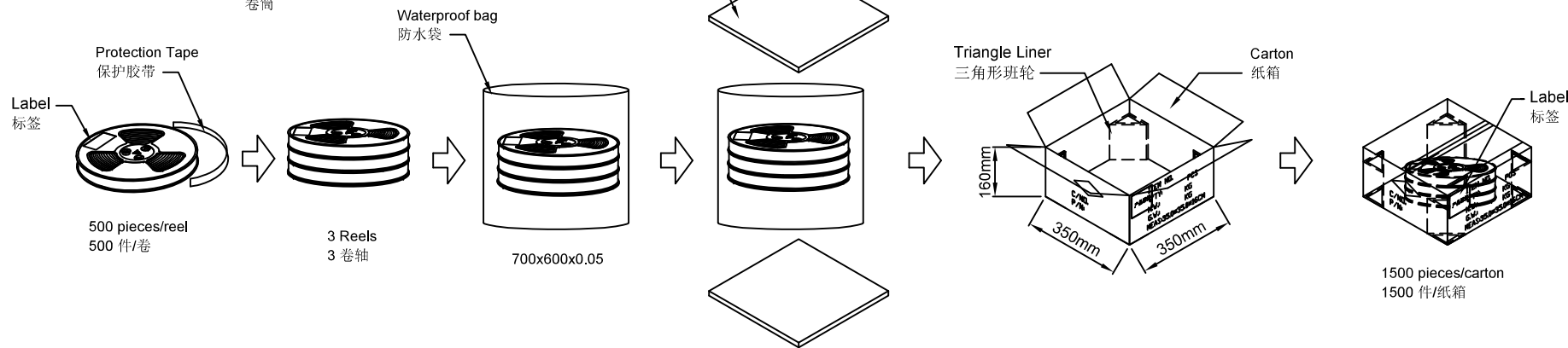
Peel off Angle  
剝皮角度



Detail F



Notes注意:  
Peeling off force of top tape: 0.1-1.3N (Peeling direction as shown)

Materials材料:  
Carrier Tape: Polystyrene (PS)  
Top Tape: PE  
Reel Tape: Polystyrene (PS)



By	AJO	ASE
DETAIL	DRAWING	UNMATING
REV	RELEASE	FORCE CHANGE
DATE	A 02/04/13	B 28/05/13



Tolerances (Except as noted)		Part Number:-	Date:-	Description:- μ USB RECEPTACLE, TYPE B, SURFACE MOUNT, VERTICAL, WITH THRU HOLE SHELL STAKES					
Dimensions in mm		USB3140	02 APR 13						
X.X ± 0.50	X.X° ± 2°	Description:-							
X.XX ± 0.30	X.XX° ± 1°			Scale	Revision	Material	Drawn by	E & OE	Sheet No.
X.XXX ± 0.20	X.XXX° ± 0.5°			NTS	B	See Note	AJO		3/3
		 THIS DRAWING IS CONFIDENTIAL AND MUST NOT BE COPIED OR DISCLOSED WITHOUT WRITTEN CONSENT							
Third Angle Projection									