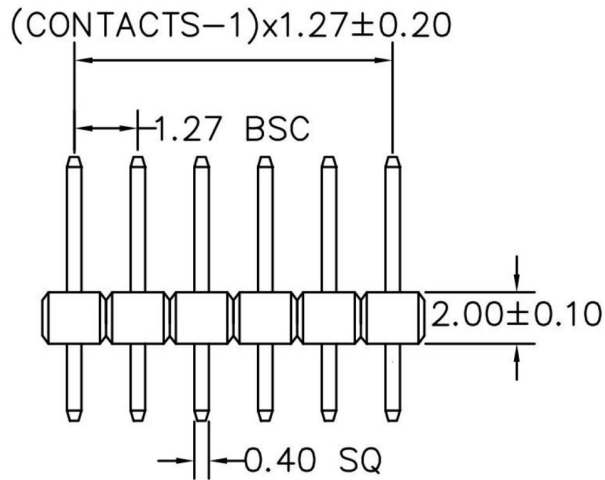
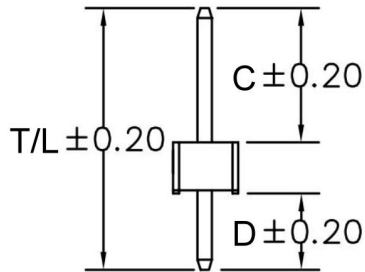


CONTACTS	1X26
1X2	1X27
1X3	1X28
1X4	1X29
1X5	1X30
1X6	1X31
1X7	1X32
1X8	1X33
1X9	1X34
1X10	1X35
1X11	1X36
1X12	1X37
1X13	1X38
1X14	1X39
1X15	1X40
1X16	1X41
1X17	1X42
1X18	1X43
1X19	1X44
1X20	1X45
1X21	1X46
1X22	1X47
1X23	1X48
1X24	1X49
1X25	1X50



RECOMMENDED P.C.B LAYOUT

KxI 2.54#xxSG-1174S



T/L: 5.80 mm C: 1.90 mm D: 1.90 mm

**MATERIAL**  
 HOUSING : THERMOPLASTIC UL94V-0  
 CONTACT : COPPER ALLOYS

**SPECIFICATION**  
 CURRENT: 1A  
 OPERATING TEMPERATURE: -55°C TO +105°C  
 CONTACT RESISTANCE : 20 MILLIOHMS MAX  
 INSULATION RESISTANCE : 5000 MEGAOHMS MIN  
 DIELECTRIC STRENGTH : 1000 VAC MIN

RoHS  
Compliant



SEMIC TRADE, s.r.o.  
 Volutová 2521/18  
 158 00 Praha 5  
 Czech Republic  
[www.semic.cz](http://www.semic.cz)  
[semic@semic.cz](mailto:semic@semic.cz)  
 tel.: +420 251 625 331, 332, 377  
 fax: +420 251 626 252, 393

APPD.  
核准  
BETTY  
 DWG.  
製圖  
BETTY  
 DATE 制表日  
2010/11/22

SCALE  
比例  
參考  
 UNIT  
單位  
MM  
 PAGE  
張數  
1 OF 1  
 TOLERANCE  
容許公差  
 .0=±0.38  
 .00=±0.25  
 ANG=±5°  
 SIZE.  
紙張尺寸  
A 4  
 REV.  
版次  
A

PART NAME 品名  
 1.27mm PIN HEADER SINGLE ROW 1XXXP  
 STRAIGHT TYPE H:2.0mm FULL GOLD PLATING  
 (C=1.9mm D=1.9mm) ROHS  
 PART NO.  
料號  
C1174-XXASGBC0R