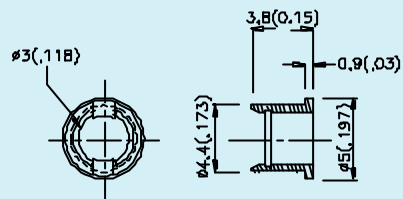
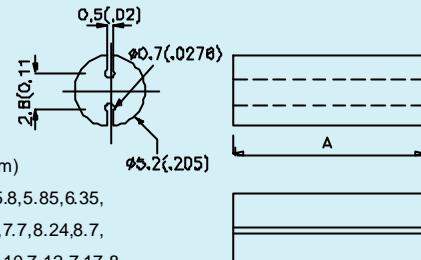


RTC-31	RTC-32	RTC-51	RTC-52	BR-A	CB-30	CB-50	CB-55
--------	--------	--------	--------	------	-------	-------	-------

RTC-31



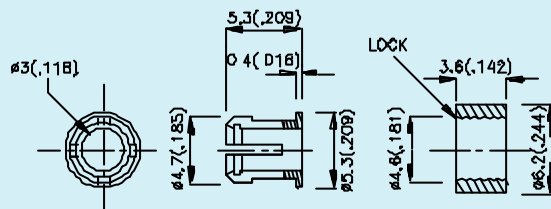
BR-A



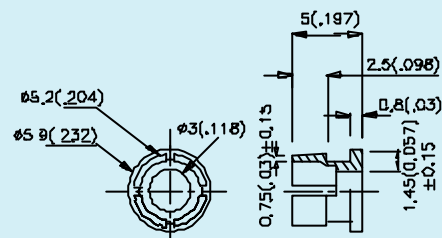
DIMA: (mm)

4.3, 4.83, 5.8, 5.85, 6.35,  
7.25, 7.62, 7.7, 8.24, 8.7,  
9.52, 9.85, 10.7, 12.7, 17.8,  
18.59, 19.86, 23.5

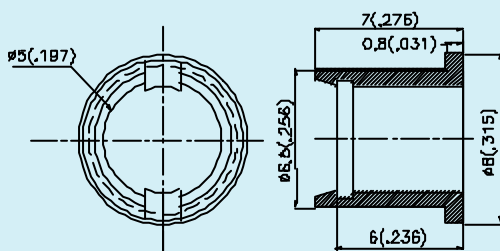
RTC-32



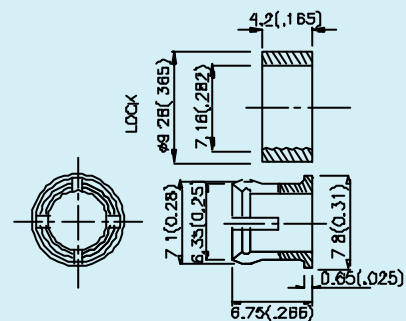
CB-30



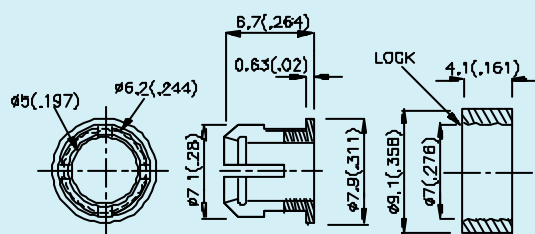
RTC-51



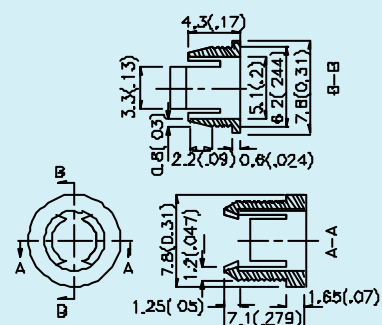
CB-50



RTC-52



CB-55



## NOTES:

1. All dimensions are in millimeters (inches).
2. Tolerance is  $\pm 0.25\text{mm}$  ( $0.01''$ ) unless otherwise noted.

RTF-1090



RTF-8080



AF



RTF-5010



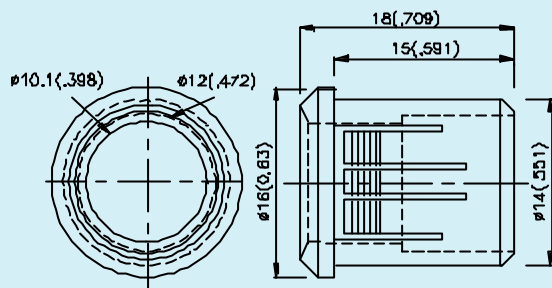
RTF-5020



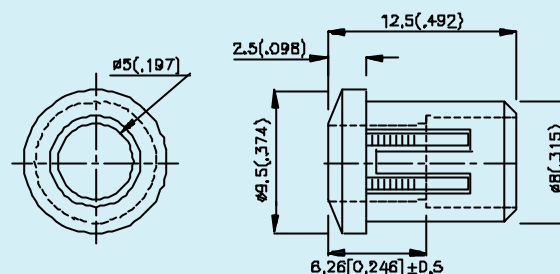
TQ-A



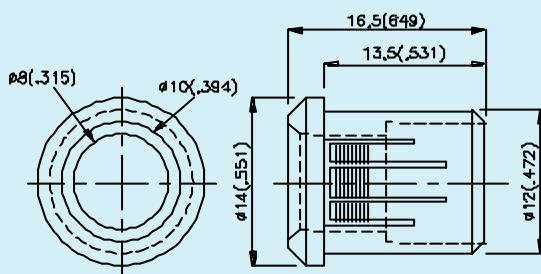
RTF-1090



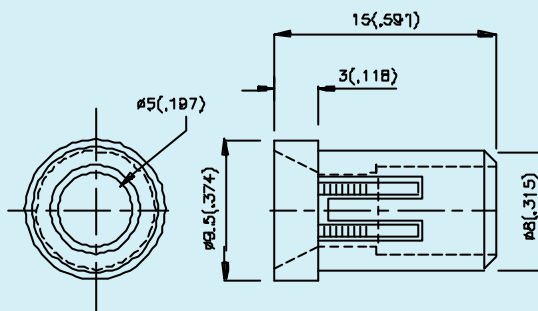
RTF-5010



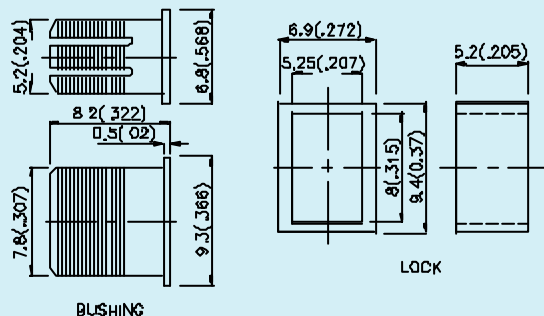
RTF-8080



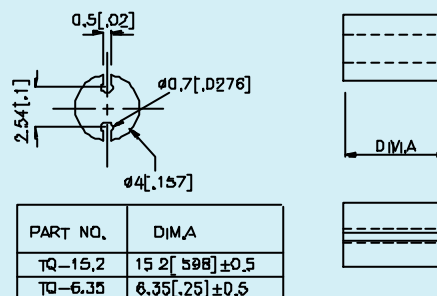
RTF-5020



AF



TQ-A



## NOTES:

1. All dimensions are in millimeters(inches).
2. Tolerance is  $\pm 0.25\text{mm}(0.01")$  unless otherwise noted.