

Appearance & Shape: To be free from any defect such as flow, burrs, unevenness etc, as per IEC standards.

Effective Parameters irrespective of material grade (per set)

Parameter	Value	Unit
Effective Length (L_e):	91.1	mm
Effective Area (A_e):	111.0	mm ²
Effective Area (A_{min}):	103.0	mm ²
Effective Volume (V_e):	10100	mm ³
Approximate weight(m):	50	g/set



“Clamping force for AL measurement is 40±20 N, unless otherwise stated”

EER3511B Un-gapped (OL)

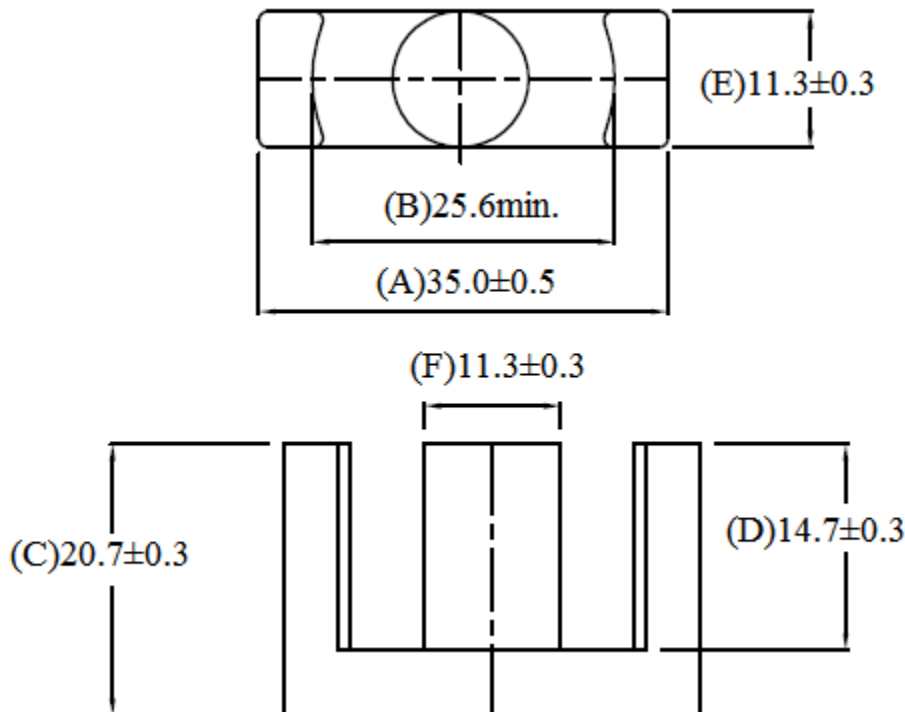
Test Conditions: 1kHz/1mT/CFR COIL, N=100/25°C

Material Grade	Initial Permeability (μ_{iac})	AL Value (nH)	μ_e Approx./Set	P_V (W/set) (25kHz,200mT, 100°C)	P_V (W/set) (100kHz,100mT, 100°C)	P_V (W/set) (100kHz,200mT, 100°C)	Ordering code
CF139	2100±20%	2550 +30%/-20%	≈1665	≤ 1.25	≤ 1.01	≤ 5.2	CF139EER3511B OL

EER3511B Gapped

Test Conditions: 1kHz/300mV/CFR COIL, N=100/25°C

Material Grade	AL(nH) Approx. /Set	S, T		D		Ordering code
		Gap Value in mm/Pc	μ_e Approx./Set	Gap Value in mm/Pc	μ_e Approx./Set	
CF139	160 ± 5%	≈ 1.9	≈ 103	≈ 0.95	≈ 103	CF139EER3511B AL160nH S/T/D
CF139	260 ± 5%	≈ 0.98	≈ 167	≈ 0.44	≈ 167	CF139EER3511B AL260nH S/T/D



General Terms & Conditions



Checked By: A.K.
Approved By: B.S.
Authorized By: KSR
Date: 03-12-2015
Rev. No.: 01

Customer's Approval
Authorized Signatory:
Name:
Date:

General Terms & Conditions



Semic Trade, s.r.o., Volutová 2521/18, 158 00 Praha 5
Telephone: +420 251 625 331, 251 625 332, 251 625 377
GSM: +420 605 999 994 Fax: +420 251 626 252, 251 626 393



www.semic.cz
semic@semic.cz