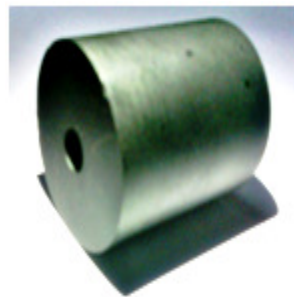


Appearance & Shape: To be free from any defect such as flow, burrs, unevenness etc, As per IEC standards.

Effective Parameters irrespective of material grade (per piece)

- Effective Length (L_e): 39.3 mm
- Effective Area (A_e): 339.9 mm²
- Effective Area (A_{Min}): 339.9 mm²
- Effective Volume (V_e): 13354 mm³

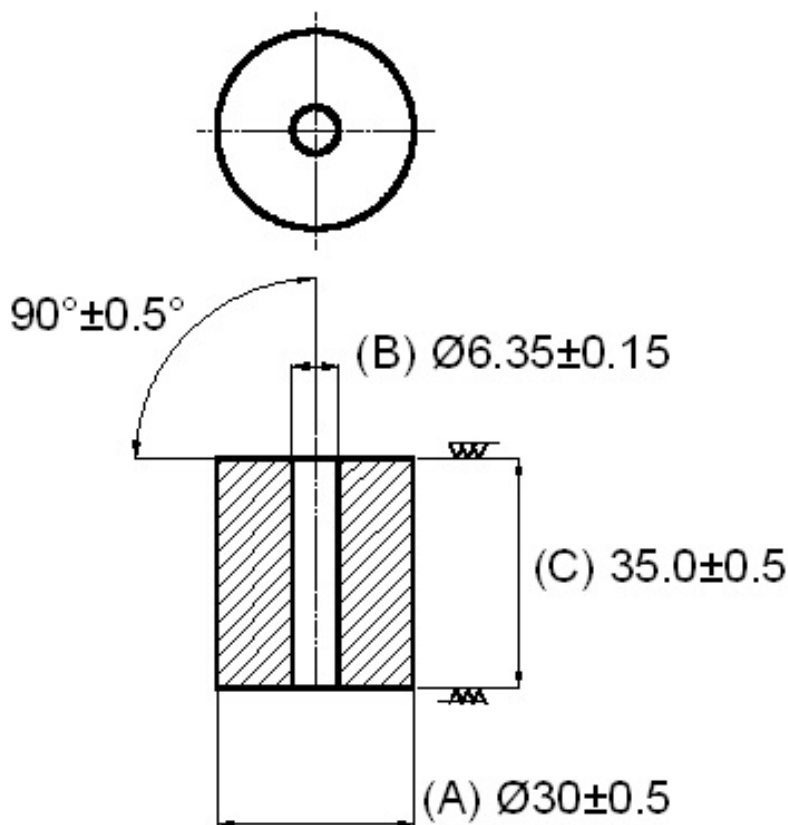
Approximate weight: 110 g/pc



R3035 (OL)

Test Conditions: 10kHz/150mV/CFR COIL, N=01/L₀=Zero/25°C

Material Grade	Initial Permeability (μ_{iac})	AL Value (nH)	μ_e Approx	P_v (W/pc)/100kHz,100mT	B_{max} (mT)/16kHz,200mT,250A/m	Ordering Code
CF139	2100 \pm 20%	22800 +30%/-20%	\approx 2100	$\leq 2.20(25^\circ\text{C})/\leq 1.33(100^\circ\text{C})$	$\geq 400(25^\circ\text{C})/\geq 330(100^\circ\text{C})$	CF139 R3035 OL
CF140	2500 \pm 20%	27100 +30%/-20%	\approx 2500	NA	NA	CF140 R3035 OL
CF295	2800 \pm 20%	30400 \pm 25%	\approx 2800	$\leq 1.33(25^\circ\text{C})/\leq 1.33(100^\circ\text{C})$	$\geq 400(25^\circ\text{C})/\geq 330(100^\circ\text{C})$	CF295 R3035 OL



For Cosmo Ferrites Limited-INDIA

Checked By: A.K.

Approved By: B.S.

Authorized By: KSR

Date: 12-02-2014 (ISSUE NO.2)

Customer's Approval

Authorized Signatory:

Name:

Date:



Semic Trade, s.r.o.

Volutová 2521/18

158 00 Praha 5

Czech Republic

www.semic.cz

semic@semic.cz

tel.: +420 251 625 331, 332, 377

For general terms and conditions please visit: http://www.cosmoferrites.com/Downloads/Downloads/bcb70e7c-ae33-40ec-a881-0d5120db57b6_GTC.pdf