

# SPECIFICATION OF R SERIES

## APPLICATIONS

The R type rod cores are mainly used as the coils which do not require adjustments as well as magnetic shield

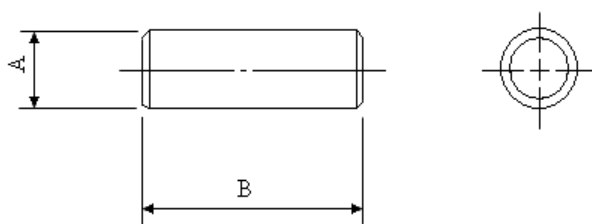
## ORDERING CODE

K5B R 6 x 30  
(1) (2) (3) (4)

- (1) MATERIAL
- (2) PRODUCT CODE
- (3) A DIM.
- (4) B DIM.



## SHAPE



## DIMENSIONS

UNIT:mm

NO.	ORDERING CODE	A	B	NO.	ORDERING CODE	A	B
1	R 2x9	2.00±0.10	9.00±0.30	26	R 6x8	6.00±0.15	8.00±0.30
2	R 2x10	2.00±0.10	10.00±0.30	27	R 6x10	6.00±0.15	10.00±0.30
3	R 2.5x5	2.50±0.15	5.00±0.30	28	R 6x15	6.00±0.15	15.00±0.40
4	R 2.5x11	2.50±0.15	11.00±0.40	29	R 6x18	6.00±0.15	18.00±0.30
5	R 2.5x18	2.50±0.15	18.00±0.40	30	R 6x20	6.00±0.15	20.00±0.40
6	R 3x10	3.00±0.15	10.00±0.30	31	R 6x25	6.00±0.15	25.00±0.50
7	R 3x12.2	3.00±0.15	12.20±0.30	32	R 6x30	6.00±0.15	30.00±0.50
8	R 3x15	3.00±0.15	15.00±0.40	33	R 6x31.75	6.00±0.15	31.75±0.70
9	R 3x22	3.00±0.15	22.00±0.40	34	R 6.25x22	6.25±0.15	22.00±0.40
10	R 3.5x10	3.50±0.15	10.00±0.30	35	R 6.35x19	6.35±0.15	19.00±0.40
11	R 4x10	4.00±0.15	10.00±0.30	36	R 6.35x25.4	6.35±0.15	25.40±0.50
12	R 4x12	4.00±0.15	12.00±0.30	37	R 6.35x31.75	6.35±0.15	31.75±0.70
13	R 4x14	4.00±0.15	14.00±0.40	38	R 6.35x35	6.35±0.15	35.00±0.80
14	R 4x16	4.00±0.15	16.00±0.40	39	R 8x20	8.00±0.20	20.00±0.40
15	R 4x18.3	4.00±0.15	18.30±0.40	40	R 8x25	8.00±0.20	25.00±0.50
16	R 4x20	4.00±0.15	20.00±0.40	41	R 8x30	8.00±0.20	30.00±0.70
17	R 4x25	4.00±0.15	25.00±0.40	42	R 8x32	8.00±0.20	32.00±0.80
18	R 4.4x20	4.40±0.15	20.00±0.40	43	R 10x16	10.00±0.20	16.00±0.40
19	R 5x15	5.00±0.15	15.00±0.40	44	R 10x20	10.00±0.20	20.00±0.40
20	R 5x18	5.00±0.15	18.00±0.40	45	R 10x25	10.00±0.20	25.00±0.50
21	R 5x19.5	5.00±0.15	19.50±0.40	46	R 10x30	10.00±0.20	30.00±0.70
22	R 5x20	5.00±0.15	20.00±0.40	47	R 10x32	10.00±0.20	32.00±0.70
23	R 5x25	5.00±0.15	25.00±0.40	48	R 10x35	10.00±0.20	35.00±0.80
24	R 5x30	5.00±0.15	30.00±0.50	49	R 10x40	10.00±0.20	40.00±0.80
25	R 5.5x12	5.50±0.15	12.00±0.30				