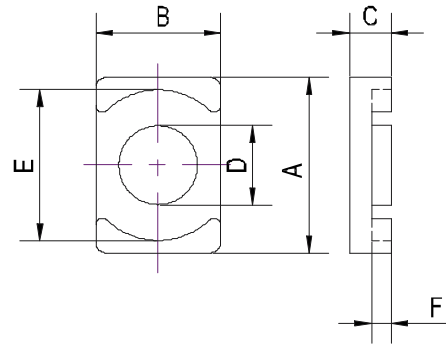


SPECIFICATION FOR APPROVAL

1. Material

Production:	Sendust Cores
KDM.P/N:	S2619EQ-E10.1-060
A_L :	$165(\text{nH}/\text{N}^2) \pm 12\%$
Material:	60 μ
Coating Color:	Uncoated
Coating material:	
Coating Breakdown Voltage:	



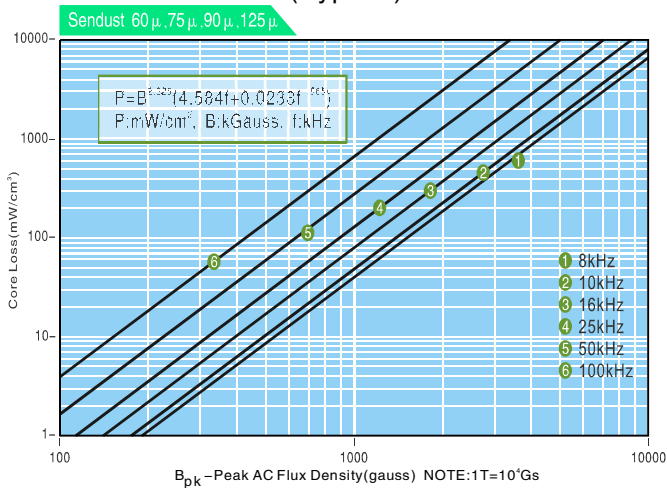
2. Physical Characteristics

Cores Dimension(mm)						ℓ_e (cm)	A_e (cm ²)	V (cm ³)	Weight (Pieces)	Box Quantity (Pieces)
A (± 0.30)	B (± 0.20)	C (± 0.20)	D (± 0.20)	E (± 0.30)	F (± 0.30)					
26.50	19.00	10.10	12.00	22.60	6.80	5.470	1.198	6.550	17.4g	/

3. Electrical Parameters(Typical) Temperature(25°C \pm 2°C)

Test Item	Test Condition	Value(Typical)
Inductance	ϕ 1.2mm/10Ts, 20kHz/1V, $I_{DC}=0A$	16.5 μ H \pm 12%
DC-Bias	ϕ 1.2mm/10Ts, 20kHz/1V, $I_{DC}=43.6A$ ($H_{DC}=100Oe$)	6.98 μ H (Min.)
Core Loss	50kHz/1000Gs	350mW/cm ³ (Max.)
Remarks		

Core Loss Curves(Typical)



DC-Bias Curves(Typical)

