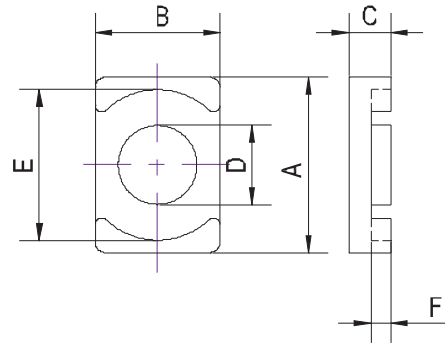


SPECIFICATION FOR APPROVAL

1. Material

Production:	Sendust Cores
KDM.P/N:	S2619EQ-E12.4-060
A_L :	141(nH/N ²) ± 12%
Material:	60 μ
Coating Color:	Uncoated
Coating material:	
Coating Breakdown Voltage:	



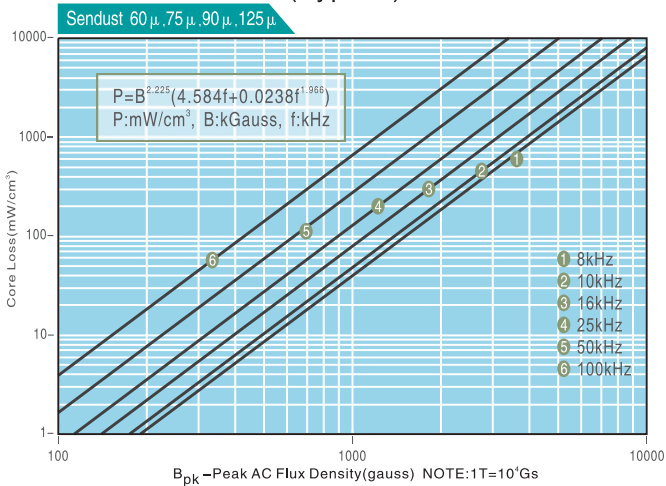
2. Physical Characteristics

Cores Dimension(mm)						ℓ_e (cm)	A_e (cm ²)	V (cm ³)	Weight (Pieces)	Box Quantity (Pieces)
A (± 0.30)	B (± 0.20)	C (± 0.20)	D (± 0.20)	E (± 0.30)	F (± 0.30)					
26.50	19.00	12.40	12.00	22.60	9.10	6.390	1.198	7.660	20.3g	/

3. Electrical Parameters(Typical) Temperature(25°C ± 2°C)

Test Item	Test Condition	Value(Typical)
Inductance	φ 1.2mm/13Ts, 20kHz/1V, I _{DC} =0A	23.8 μH ± 12%
DC-Bias	φ 1.2mm/13Ts, 20kHz/1V, I _{DC} =39A(H _{DC} =100Oe)	10.1 μH(Min.)
Core Loss	50kHz/1000Gs	350mW/cm ³ (Max.)
Remarks		

Core Loss Curves(Typical)



DC-Bias Curves(Typical)

