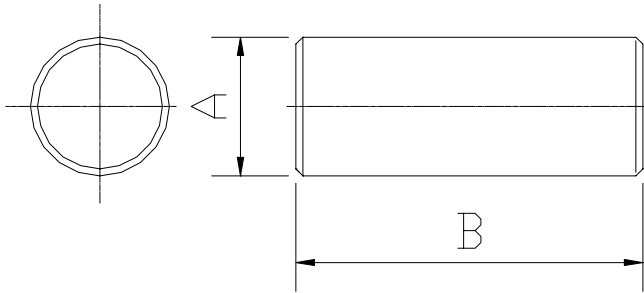


Ljn R 4.00 x 15 - TN25H

Type	R 4.00 x 15	MATERIAL	TN25H
		SPEC.NO.	
		Page No.	1/1

1 Shape and Dimensions unit mm



Specification and Testing Instrument

A	B									
+0.15	+0.5									
-0.15	-0.5									
4.0	15.0									
Micrometer		Projector				inside calliper				

2 Characteristics

Item	Specification	Test Condition	Testing Instrument
L(μH) (Inductance)	1.95±20%	1KHz ,1V 2-UEW - φ0.8 - 10.5Ts	HP-4284A

3 MAXIMUM CHIP OFF:

the surface, the total chip square should be no more than 2%, and quantity should be no more than 2.