

# Bussmann series

## XL Fuse bases for XL Style photovoltaic fuse links



### **Product description**

Eaton's Bussmann series range of XL package fuse bases with integral shields has been specifically designed to be fitted with Eaton's Bussmann series XL photovoltaic fuse links (see data sheet 10201).



*Powering Business Worldwide*

### Catalogue symbol

- SB1XL-S to fit 01XL and 1XL PV Fuse links\*
- SB2XL-S to fit 2XL PV fuse links\*
- SB3L-S to fit 3L PV fuse links\*

\* Please refer to data sheet 10201 for details on Eaton's Bussmann series XL style photovoltaic fuse links

### Technical data

- Rated voltage: 1500 V d.c.
- Rated current: 250, 400 and 630 A
- Power acceptance (Watts)
  - Sizes 01XL and 1XL: 56W
  - Size 2XL: 70W
  - Size 3L: 96W
- Degree of protection level: IP20 with terminal covers and gripping lug cover in place and shielding of any exposed part of the terminal lugs
- Operating temperature range: -45°C to 80°C (with fuse link derating above 40°C)
- Dielectric strength: 3820 V d.c. applied for a voltage rating  $U_n$  of 1500 V d.c. for the base
- Screw mounting, dimensions and spacing of screw holes are shown on drawing and dimension table page 3
- Terminal/Lug mounting torque: 32N•m
- Silver plated copper fuse clips
- UL94 Flammability rating: base V-2, terminal cover V-0
- Terminal covers are UV stabilised
- Weight:
  - SB1XL-S: 0.61 kg
  - SB2XL-S: 0.62 kg
  - SB3L-S: 1.04 kg

### Standards/Approvals

- IEC 60269-1
- UL Listed (file number E348242)

### Packaging

- MOQ: 1

### Application note

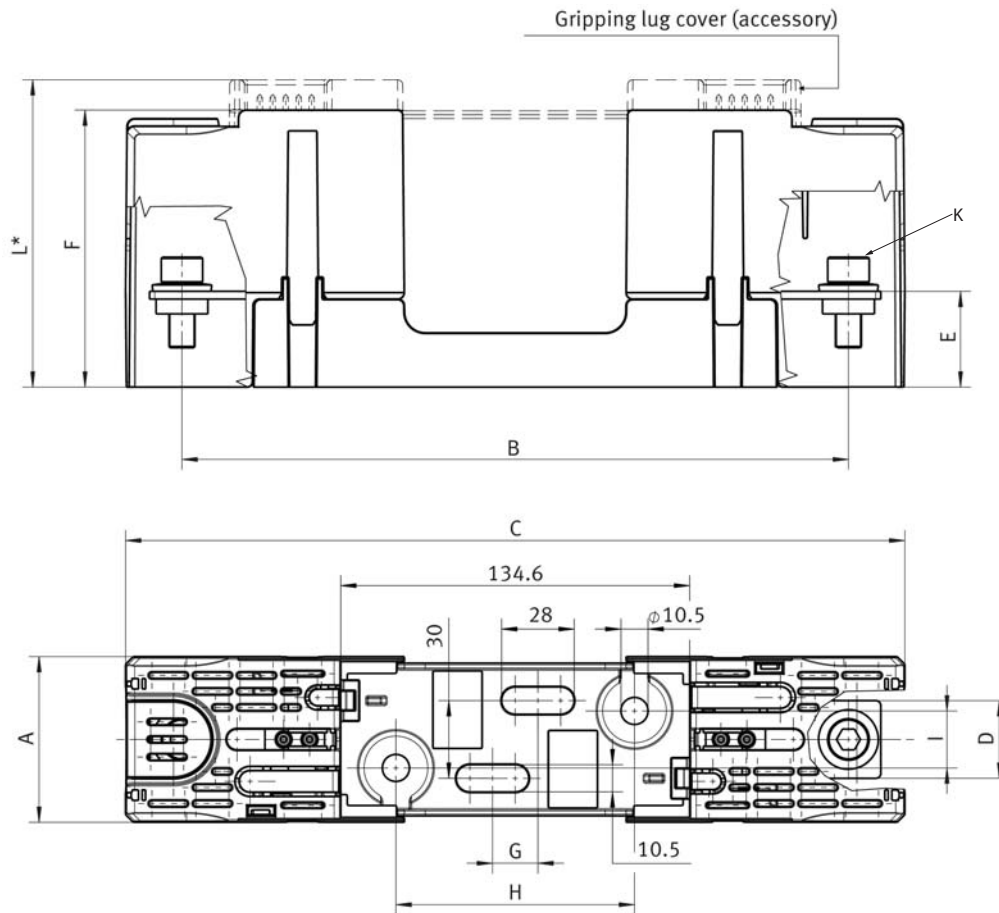
Rated current ( $I_n$ ) of the sub-array or array fuse links shall be  $1.25 \times I_{sc\_array} < I_n < 2.4 I_{sc\_array}$  in accordance with IEC 60269-6 where  $I_{sc\_array}$  is the current at the output terminals of a PV array at a particular temperature and irradiance when the device output voltage is equal to or close to zero. Thus the current experienced by the fuse link and fuse base under normal PV array service conditions will not exceed  $0.8 \times I_n$ . These Eaton recommendations are based on this worst case condition.

### Accessory

Fuse extraction handle available in sizes 01XL to 3L  
 Catalogue number: FEH1500  
 Unit packing: 1

**Dimensions - mm**

Catalogue numbers	XL Style fuse link size	Maximum fuse rated current	Power acceptance	A	B	C	D	E	F	G	H	I	K	L
SB1XL-S	01XL, 1XL	250	56W	59	257	300.5	30	37	102.5	17.5	92	22	M10x25	111
SB2XL-S	2XL	400	70W	64	257	300.5	30	37	107	17.5	92	22	M10x25	119
SB3L-S	3L	630	96W	80	270	328	40	38	122.5	25	96	26	M12x30	134.5



Changes to the products, to the information contained in this document, and to prices are reserved; so are errors and omissions. Only order confirmations and technical documentation by Eaton is binding. Photos and pictures also do not warrant a specific layout or functionality. Their use in whatever form is subject to prior approval by Eaton. The same applies to Trademarks (especially Eaton, Moeller, and Cutler-Hammer). The Terms and Conditions of Eaton apply, as referenced on Eaton Internet pages and Eaton order confirmations.