

### THICK FILM POWER RESISTOR PR600

#### FEATURES

Very good ratio Power / Volume  
Easy mounting and wiring with significant cost advantages.  
Non inductive performance for high frequency applications.  
One models for power applications up to 600W.  
Suited to UL94-V0 application

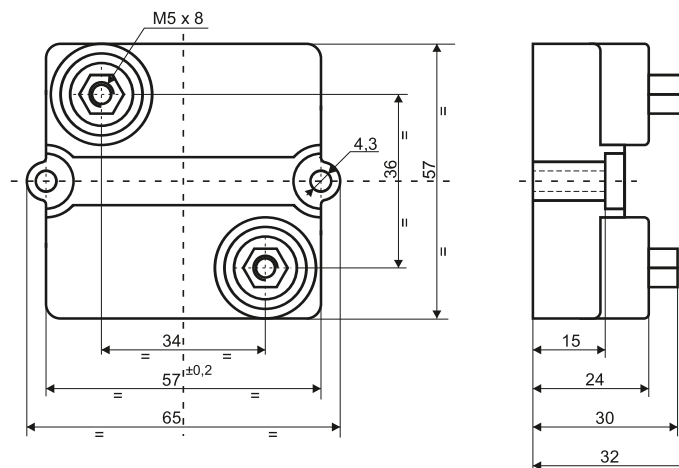
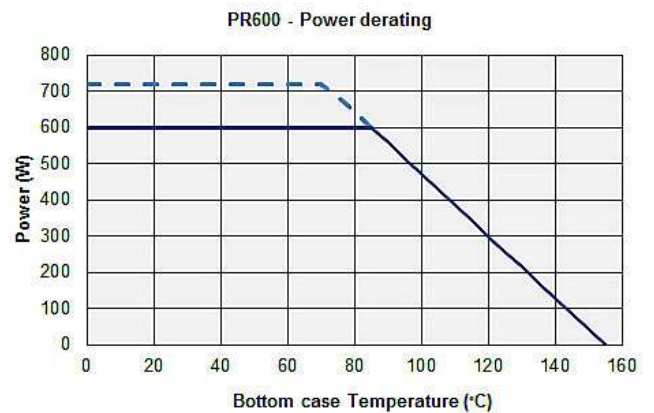


#### ELECTRICAL SPECIFICATIONS

**Power rating:** 600W @ 85°C Bottom case Temperature  
For power greater than 600W  
please consult Technical Dept.  
**Resistance Range:** from 1R0 to 1M0  
**Resistance Values:** E12 series  
For out of range or not std. values  
please contact ATE Electronics Technical Dept.

**Tolerance:** Standard  $\pm 10\%$ .  
Available on request up to  $\pm 1\%$

**Temperature coefficient:**  $\pm 150$  ppm/°C  
**Work Temperature Range:** from -55°C to +155°C  
**Max Working Voltage:** 5kV,  $\sqrt{(P \times R)}$   
**Dielectric strength:** 7kVac x 60"  
**Insulation resistance:**  $> 10^9$  MΩ at 500V  
**Creep distance:** 42mm  
**Air Gap distance:** 16mm  
**Partial Discharge:**  $< 10$  pC @ 5kVac  
**Self Inductance:** 80nH  
**Parallel Capacitance:** 40pF  
**Capacitance to heatsink:**  $< 110$  pF  
**Overload:** 1kW x 10"  
**Thermal resistance:** 0,115°C/W  
**Heatsink flatness:** 0,05mm max  
**Heatsink surface finish:** 6,3μm max  
**Thermal grease:** Required,  $\lambda > 1$  W/mK  
**Max Torque for contacts:** 2Nm (static)  
**Max Torque for mounting:** 2Nm (static)  
**Weight:** 95g



"Connection and mounting screws are supplied with the resistor  
All dimensions are in mm"