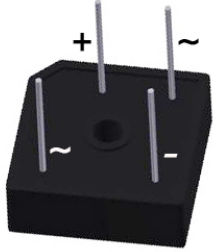


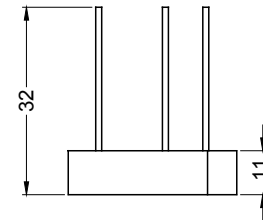
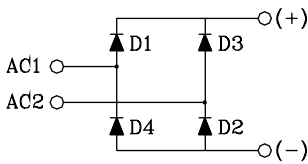
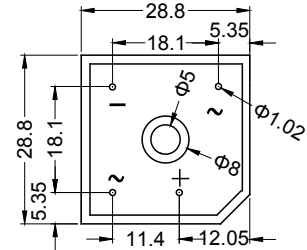
S1PDB35xxW

Single Phase Bridge Rectifiers

Dimensions in mm (1mm=0.0394")



Type	V _{RSM} V	V _{RRM} V
S1PDB3506W	700	600
S1PDB3508W	900	800
S1PDB3512W	1300	1200
S1PDB3514W	1500	1400
S1PDB3516W	1700	1600
S1PDB3518W	1900	1800



Symbol	Characteristics	Maximum Ratings	Unit
I _{AV}	Maximum Average Forward Rectified Current @T _c =50°C (With Heatsink)	35.0	A
I _{FSM}	Peak Forward Surge Current 8.3ms Single Half-Sine-Wave Superimposed On Rated Load (JEDEC METHOD)	400	A
V _F	Maximum Forward Voltage At 17.5A DC	1.1	V
I _R	Maximum DC Reverse Current At Rated DC Blocking Voltage	@T _J =25°C 5.0 @T _J =125°C 500	uA
I ² t	I ² t Rating For Fusing (t < 8.3 ms), (Note 1)	660	A ² S
C _J	Typical Junction Capacitance Per Element (Note 2)	150	pF
R _{θJC}	Typical Thermal Resistance (Note 3)	1.2	°C/W
T _J	Operating Temperature Range	-55 to +150	°C
T _{stg}	Storage Temperature Range	-55 to +150	°C

NOTES: 1. Measured At Non-repetitive, For Greater Than 1ms And Less Than 8.3ms.
2. Measured At 1.0MHz And Applied Reverse Voltage Of 4.0V DC.
3. Device Mounted On 300mm x 300mm x 1.6mm Heatsink.

FEATURES

- * Rating to 1800V PRV
- * High efficiency
- * Glass passivated chip junction
- * Electrically isolated metal case for maximum heat dissipation

MECHANICAL DATA

- * Case: Molded plastic with Heatsink internally mounted in the bridge encapsulation
- * Polarity: As marked on Body
- * Mounting: Hole for # 10 screw
- * Weight: 0.63 ounces, 18.0 grams

Sirectifier®

S1PDB35xxW

Single Phase Bridge Rectifiers

FIG.1 - FORWARD CURRENT DERATING CURVE

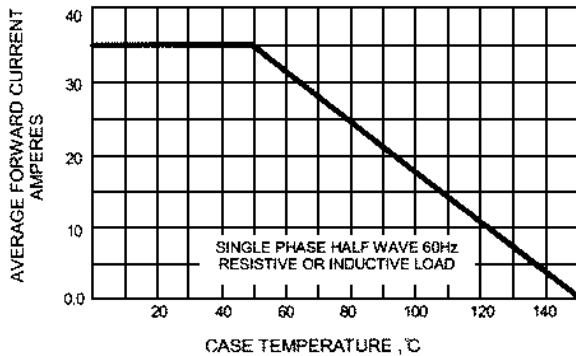


FIG.2 - MAXIMUM NON-REPETITIVE SURGE CURRENT

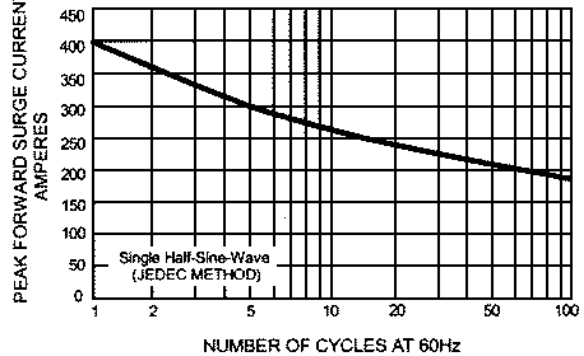


FIG.3 - TYPICAL JUNCTION CAPACITANCE

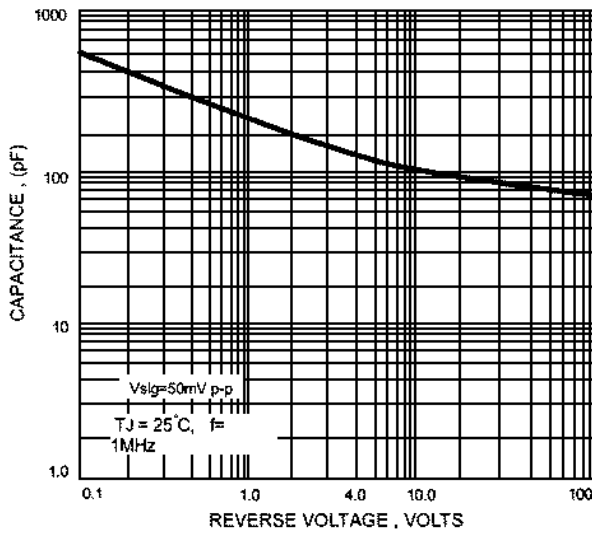


FIG.4 - TYPICAL FORWARD CHARACTERISTICS

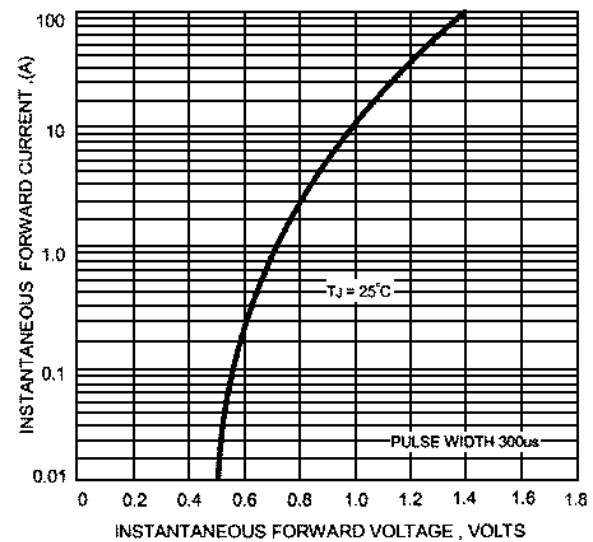
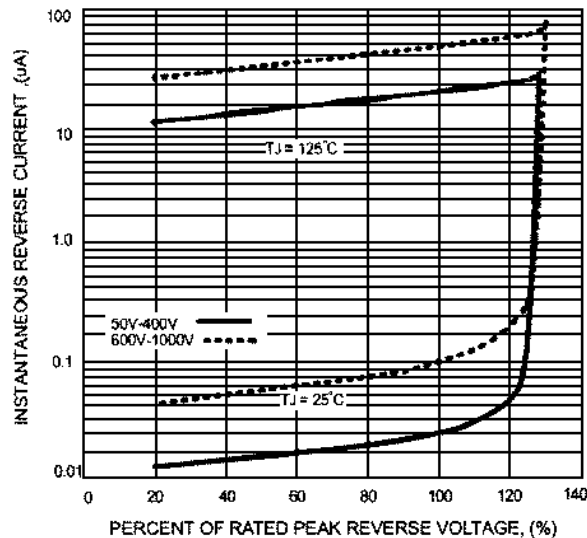


FIG.5 - TYPICAL REVERSE CHARACTERISTICS



Sirectifier®