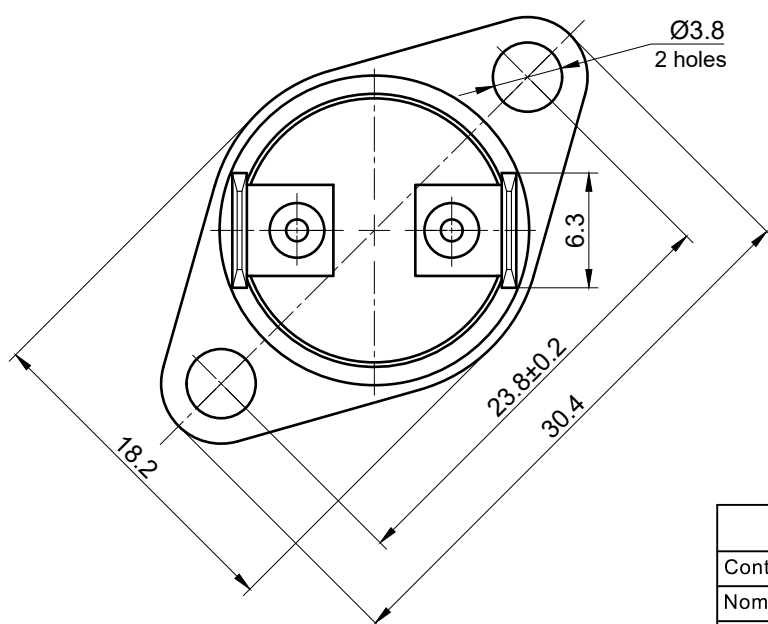
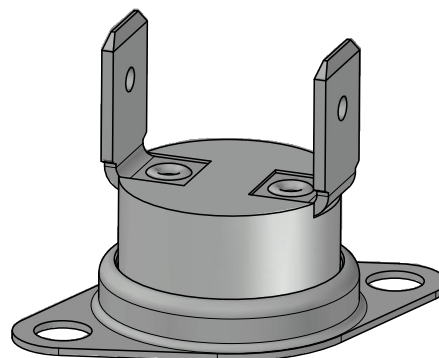
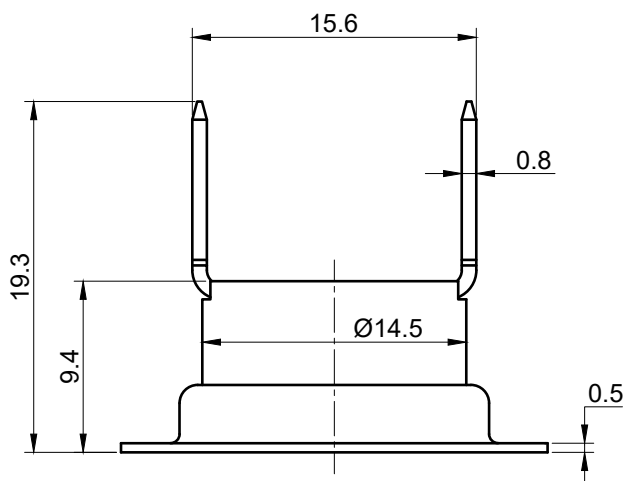


PRODUCT SPECIFICATION



BASIC TECHNICAL DATA

Parameters name	Value
Contact type	NO
Nominal voltage, V, not more	~250
Nominal current, A, at power coeff. 0.95, not more	16
Switching cycles, at current 16A and power coeff. 0.95, not less than	30000
Switching cycles, at current 10A and power coeff. 0.95, not less than	100000
Response temperature, °C	60
Response temperature tolerance, °C	±3
Reset temperature, °C	45±5
Contact resistance, Ω not more	0.05
Electric strength of insulation, V, not less than	1500
Insulation resistance, MΩ, not less than	50
Degrees of protection provided by enclosure	IP4X
Heating speed, K/min	min-0.1; max-1.0

NOTES:

- Approvals: VDE; UL
- All non-indicated tolerances according to DIN ISO 2768 mK