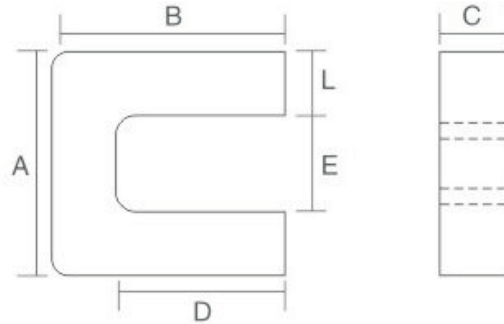


# SPECIFICATION FOR APPROVAL

## 1. Material

Production:	Sendust Cores
KDM.P/N:	S3536U-E20-060
$A_L$ :	$98(nH/N^2) \pm 12\%$
Material:	60 $\mu$
Coating Color:	Uncoated
Coating material:	
Coating Breakdown Voltage:	



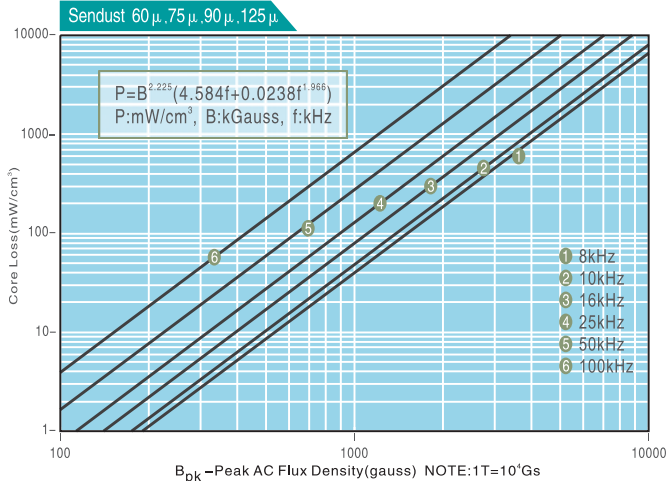
## 2. Physical Characteristics

Cores Dimension(mm)						$l_e$ (cm)	$A_e$ (cm <sup>2</sup> )	$V$ (cm <sup>3</sup> )	Weight (Pieces)	Box Quantity (Pieces)
A ( $\pm 0.50$ )	B ( $\pm 0.50$ )	C ( $\pm 0.50$ )	D (Ref.)	E (Ref.)	L ( $\pm 0.30$ )					
35.00	36.00	20.00	25.00	13.00	11.00	16.900	2.200	37.180	106.0g	/

## 3. Electrical Parameters(Typical) Temperature(25°C $\pm$ 2°C)

Test Item	Test Condition	Value(Typical)
Inductance	$\phi$ 1.0mm/50Ts, 20kHz/1V, $I_{DC}=0A$	245.0 $\mu$ H $\pm$ 12%
DC-Bias	$\phi$ 1.0mm/50Ts, 20kHz/1V, $I_{DC}=27A$ ( $H_{DC}=100Oe$ )	103.6 $\mu$ H (Min.)
Core Loss	50kHz/1000Gs	350mW/cm <sup>3</sup> (Max.)
Remarks		

### Core Loss Curves(Typical)



### DC-Bias Curves(Typical)

