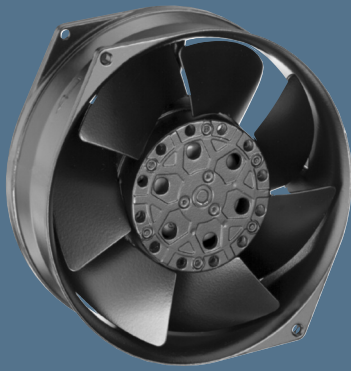


max. 380 m<sup>3</sup>/h

# AC axial fans

Series 7800 150 Ø x 55 mm



- AC fans with external rotor shaded-pole motor. Protected against overloading by integrated thermal cut-out.
- Metal fan housing and impeller.
- Air exhaust over struts. Direction of rotation counter-clockwise, seen on rotor.
- Electrical connection via 2 leads. Bared and tin-plated.
- Fan housing with grounding lug and screw M4 x 6.
- Mass: 1.1 kg.
- Please note our new ACmaxx series. With identical mounting dimensions and voltages, this series achieves higher energy efficiency.

| Nominal data |  | Air flow          | Air flow | Nominal voltage | Frequency | Sound pressure level | Sound power level | Sinter sleeve bearings<br>Ball bearings | Power input | Nominal speed | Temperature range | Service life L <sub>10</sub><br>at 40 °C | at T <sub>max</sub> | Curve |
|--------------|--|-------------------|----------|-----------------|-----------|----------------------|-------------------|---|-------------|---------------|-------------------|--|---------------------|-------|
| Type         |  | m <sup>3</sup> /h | CFM      | V               | Hz        | dB(A)                | Bel(A)            | ■ / ■                                   | Watts       | RPM           | °C                | Hours                                    | Hours               |       |
| 7855 ES      |  | 325               | 191,3    | 230             | 50        | 49                   | 6,0               | ■                                       | 45,0        | 2 800         | -25...+50         | 60 000 / 47 000                          |                     | 1     |
| 7856 ES      |  | 325               | 191,3    | 230             | 50        | 49                   | 6,0               | ■                                       | 45,0        | 2 800         | -25...+70         | 60 000 / 23 000                          |                     | 1     |
| 7805 ES      |  | 380               | 223,7    | 115             | 60        | 53                   | 6,4               | ■                                       | 38,0        | 3 250         | -25...+70         | 60 000 / 47 000                          |                     | 2     |
| 7806 ES      |  | 380               | 223,7    | 115             | 60        | 53                   | 6,4               | ■                                       | 38,0        | 3 250         | -25...+90         | 60 000 / 18 000                          |                     | 2     |

Minimum ambient temperature -15 °C, admissible for a short time at -30 °C; without condensation.

