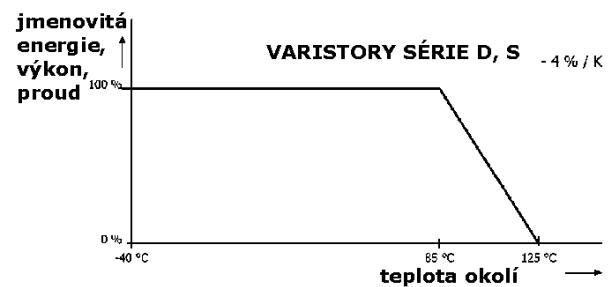
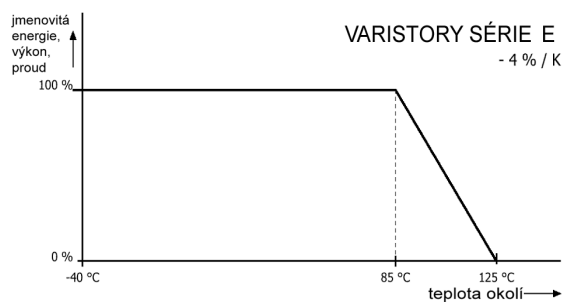
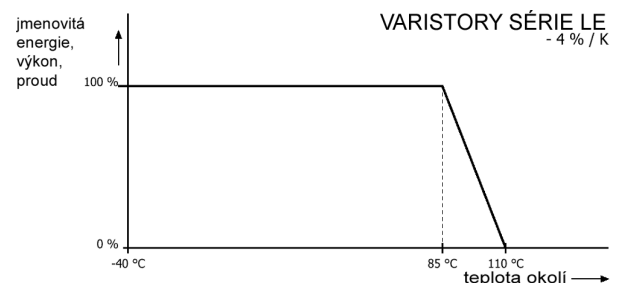
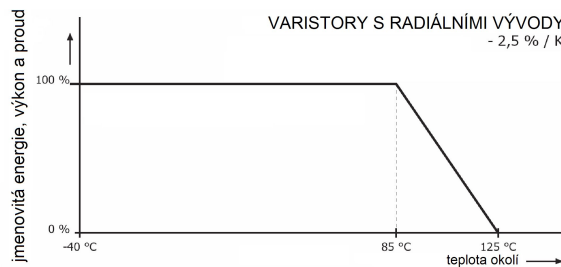
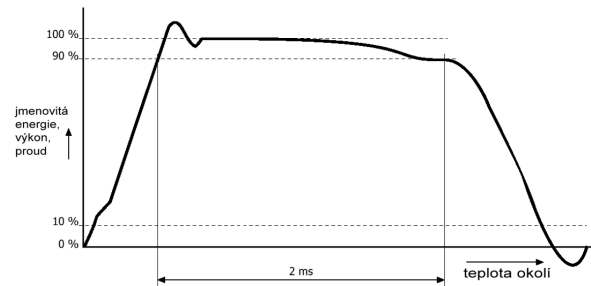
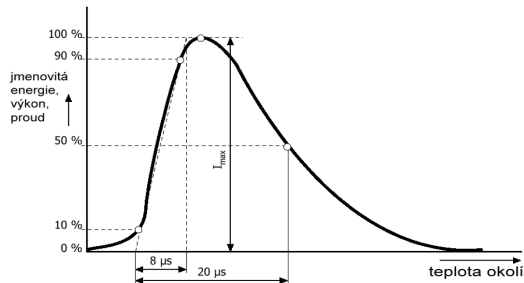




| | D32LE | S40LE | E25, E32, E40 | D25/D32/D40/D60 | S40 |
|-----------------------|----------|----------|---------------|-----------------|----------|
| ekvivalent | - | - | - | - | - |
| E [mm] | 25.4 | 25.4 | 24.0 | 25/32/40/60 | 33.0 |
| Un [V] | 205÷1800 | 205÷1800 | 205÷1200 | 205÷1800 | 205÷1800 |
| I _{max} [kA] | 25 | 40 | 15÷40 | 15÷70 | 40 |
| W _{max} [J] | 220÷1200 | 320÷1850 | 150÷1230 | 150÷3000 | 320÷1850 |
| P _{max} [W] | 1.2 | 1.4 | 1.0÷1.4 | 1.0÷1.6 | 1.4 |
| strana číslo | A14-23 | A14-23 | A14-23, 24 | A14-24, 25 | A14-25 |
| prac.teplota | -25+85°C | -25+85°C | -40+85°C | -40+85°C | -40+85°C |



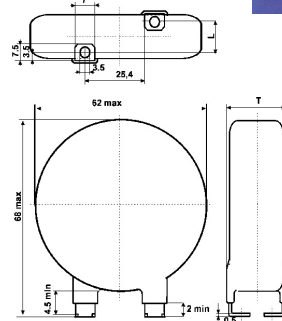
reakční doba: < 25ns
elektrická pevnost: ≥2500V
vyhovují normám: UL1449 a CSA

izolační odpor: ≥ 1GΩ
povolený špičkový proud I_{max} (8/20s) (ta=+85°C) =70kA

Přepět'ové ochrany - varistory výkonové

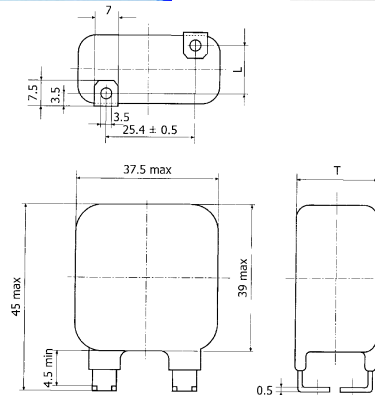
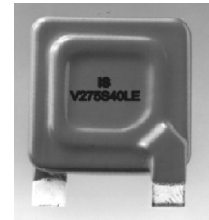
D32LE

| označení | U_{RMS} [V] | U_{DC} [V] | P_{max} [W] | I_{max} (8/20s) [kA] | W_{max} (2ms) [J] | U_N (1mA) [V] | ΔU_N [%] | U_C (8/20s) [V] | I_C (8/20s) [A] | C (1kHz) [pF] | T_{max} [mm] | $L \pm 1$ [mm] |
|------------|---------------|--------------|---------------|------------------------|---------------------|-----------------|------------------|-------------------|-------------------|---------------|----------------|----------------|
| V130D32LE | 130 | 170 | 1.2 | 25 | 220 | 205 | ± 10 | 340 | 200 | 4400 | 8.0 | -3.00 |
| V140D32LE | 140 | 180 | 1.2 | 25 | 235 | 220 | ± 10 | 360 | 200 | 4100 | 8.1 | -2.95 |
| V150D32LE | 150 | 200 | 1.2 | 25 | 250 | 240 | ± 10 | 395 | 200 | 3700 | 8.2 | -2.90 |
| V175D32LE | 175 | 225 | 1.2 | 25 | 270 | 270 | ± 10 | 455 | 200 | 3000 | 8.6 | -2.50 |
| V230D32LE | 230 | 300 | 1.2 | 25 | 310 | 360 | ± 10 | 595 | 200 | 2500 | 8.9 | -2.00 |
| V250D32LE | 250 | 320 | 1.2 | 25 | 340 | 390 | ± 10 | 650 | 200 | 2200 | 9.1 | -1.80 |
| V275D32LE | 275 | 350 | 1.2 | 25 | 370 | 430 | ± 10 | 710 | 200 | 2000 | 9.3 | -1.60 |
| V300D32LE | 300 | 385 | 1.2 | 25 | 400 | 470 | ± 10 | 775 | 200 | 1900 | 9.6 | -1.30 |
| V320D32LE | 320 | 420 | 1.2 | 25 | 440 | 510 | ± 10 | 840 | 200 | 1700 | 9.8 | -1.00 |
| V385D32LE | 385 | 505 | 1.2 | 25 | 560 | 620 | ± 10 | 1025 | 200 | 1400 | 10.6 | -0.20 |
| V420D32LE | 420 | 560 | 1.2 | 25 | 615 | 680 | ± 10 | 1120 | 200 | 1300 | 11.0 | 0.20 |
| V440D32LE | 440 | 585 | 1.2 | 25 | 630 | 715 | ± 10 | 1180 | 200 | 1250 | 11.2 | 0.40 |
| V460D32LE | 460 | 615 | 1.2 | 25 | 670 | 750 | ± 10 | 1240 | 200 | 1200 | 11.4 | 0.60 |
| V510D32LE | 510 | 670 | 1.2 | 25 | 690 | 820 | ± 10 | 1355 | 200 | 1100 | 12.0 | 1.30 |
| V550D32LE | 550 | 745 | 1.2 | 25 | 710 | 910 | ± 10 | 1500 | 200 | 1000 | 12.4 | 1.50 |
| V625D32LE | 625 | 825 | 1.2 | 25 | 730 | 1000 | ± 10 | 1650 | 200 | 950 | 13.0 | 2.00 |
| V680D32LE | 680 | 895 | 1.2 | 25 | 780 | 1100 | ± 10 | 1815 | 200 | 850 | 13.5 | 2.60 |
| V750D32LE | 750 | 1060 | 1.2 | 25 | 820 | 1200 | ± 10 | 1980 | 200 | 800 | 14.1 | 3.20 |
| V1100D32LE | 1100 | 1465 | 1.2 | 25 | 1200 | 1800 | ± 10 | 2970 | 200 | 600 | 17.0 | 6.20 |



S40LE

| označení | U_{RMS} [V] | U_{DC} [V] | P_{max} [W] | I_{max} (8/20s) [kA] | W_{max} (2ms) [J] | U_N (1mA) [V] | ΔU_N [%] | U_C (8/20s) [V] | I_C (8/20s) [A] | C (1kHz) [pF] | T_{max} [mm] | $L \pm 1$ [mm] |
|------------|---------------|--------------|---------------|------------------------|---------------------|-----------------|------------------|-------------------|-------------------|---------------|----------------|----------------|
| V130S40LE | 130 | 170 | 1.4 | 40 | 320 | 205 | ± 10 | 340 | 300 | 5800 | 8.0 | -3.00 |
| V140S40LE | 140 | 180 | 1.4 | 40 | 340 | 220 | ± 10 | 360 | 300 | 5400 | 8.1 | -2.95 |
| V150S40LE | 150 | 200 | 1.4 | 40 | 370 | 240 | ± 10 | 395 | 300 | 5000 | 8.2 | -2.90 |
| V175S40LE | 175 | 225 | 1.4 | 40 | 410 | 270 | ± 10 | 455 | 300 | 4200 | 8.6 | -2.50 |
| V230S40LE | 230 | 300 | 1.4 | 40 | 470 | 360 | ± 10 | 595 | 300 | 3400 | 8.9 | -2.00 |
| V250S40LE | 250 | 320 | 1.4 | 40 | 505 | 390 | ± 10 | 650 | 300 | 3100 | 9.1 | -1.80 |
| V275S40LE | 275 | 350 | 1.4 | 40 | 565 | 430 | ± 10 | 710 | 300 | 2900 | 9.3 | -1.60 |
| V300S40LE | 300 | 385 | 1.4 | 40 | 600 | 470 | ± 10 | 775 | 300 | 2700 | 9.6 | -1.30 |
| V320S40LE | 320 | 420 | 1.4 | 40 | 655 | 510 | ± 10 | 840 | 300 | 2400 | 9.8 | -1.00 |
| V385S40LE | 385 | 505 | 1.4 | 40 | 815 | 620 | ± 10 | 1025 | 300 | 2000 | 10.6 | -0.20 |
| V420S40LE | 420 | 560 | 1.4 | 40 | 930 | 680 | ± 10 | 1120 | 300 | 1900 | 11.0 | 0.20 |
| V440S40LE | 440 | 585 | 1.4 | 40 | 950 | 715 | ± 10 | 1180 | 300 | 1800 | 11.2 | 0.40 |
| V460S40LE | 460 | 615 | 1.4 | 40 | 1010 | 750 | ± 10 | 1240 | 300 | 1700 | 11.4 | 0.60 |
| V510S40LE | 510 | 670 | 1.4 | 40 | 1040 | 820 | ± 10 | 1355 | 300 | 1600 | 12.0 | 1.30 |
| V550S40LE | 550 | 745 | 1.4 | 40 | 1080 | 910 | ± 10 | 1500 | 300 | 1500 | 12.4 | 1.50 |
| V625S40LE | 625 | 825 | 1.4 | 40 | 1100 | 1000 | ± 10 | 1650 | 300 | 1400 | 13.0 | 2.00 |
| V680S40LE | 680 | 895 | 1.4 | 40 | 1130 | 1100 | ± 10 | 1815 | 300 | 1200 | 13.5 | 2.60 |
| V750S40LE | 750 | 1060 | 1.4 | 40 | 1230 | 1200 | ± 10 | 1980 | 300 | 1100 | 14.1 | 3.20 |
| V1100S40LE | 1100 | 1465 | 1.4 | 40 | 1850 | 1800 | ± 10 | 2970 | 300 | 800 | 17.0 | 6.20 |



E25

| Označení | U_{RMS} [V] | U_{DC} [V] | P_{max} [W] | I_{max} (8/20s) [kA] | W_{max} (2ms) [J] | U_N (1mA) [V] | ΔU_N [%] | U_C (8/20s) [V] | I_C (8/20s) [A] | C (1kHz) [pF] |
|----------|---------------|--------------|---------------|------------------------|---------------------|-----------------|------------------|-------------------|-------------------|---------------|
| V130E25 | 130 | 170 | 1 | 15 | 150 | 205 | ± 10 | 340 | 150 | 2600 |
| V140E25 | 140 | 180 | 1 | 15 | 155 | 220 | ± 10 | 360 | 150 | 2400 |
| V150E25 | 150 | 200 | 1 | 15 | 160 | 240 | ± 10 | 395 | 150 | 2200 |
| V175E25 | 175 | 225 | 1 | 15 | 170 | 270 | ± 10 | 455 | 150 | 2000 |
| V230E25 | 230 | 300 | 1 | 15 | 190 | 360 | ± 10 | 595 | 150 | 1600 |
| V250E25 | 250 | 320 | 1 | 15 | 210 | 390 | ± 10 | 650 | 150 | 1400 |
| V275E25 | 275 | 350 | 1 | 15 | 230 | 430 | ± 10 | 710 | 150 | 1300 |
| V300E25 | 300 | 385 | 1 | 15 | 240 | 470 | ± 10 | 775 | 150 | 1200 |
| V320E25 | 320 | 420 | 1 | 15 | 275 | 510 | ± 10 | 840 | 150 | 1100 |
| V385E25 | 385 | 505 | 1 | 15 | 320 | 620 | ± 10 | 1025 | 150 | 900 |
| V420E25 | 420 | 560 | 1 | 15 | 360 | 680 | ± 10 | 1120 | 150 | 800 |
| V440E25 | 440 | 585 | 1 | 15 | 380 | 715 | ± 10 | 1180 | 150 | 750 |
| V460E25 | 460 | 615 | 1 | 15 | 390 | 750 | ± 10 | 1240 | 150 | 700 |
| V510E25 | 510 | 670 | 1 | 15 | 410 | 820 | ± 10 | 1355 | 150 | 650 |
| V550E25 | 550 | 745 | 1 | 15 | 425 | 910 | ± 10 | 1500 | 150 | 600 |
| V625E25 | 625 | 825 | 1.2 | 25 | 435 | 1000 | ± 10 | 1650 | 200 | 550 |
| V680E25 | 680 | 895 | 1.2 | 25 | 465 | 1100 | ± 10 | 1815 | 200 | 530 |
| V750E25 | 750 | 1060 | 1 | 15 | 485 | 1200 | ± 10 | 2000 | 150 | 500 |

E32

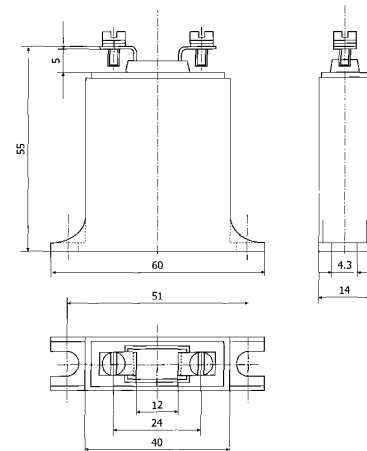
| označení | U_{RMS} [V] | U_{DC} [V] | P_{max} [W] | I_{max} (8/20s) [kA] | W_{max} (2ms) [J] | U_N (1mA) [V] | ΔU_N [%] | U_C (8/20s) [V] | I_C (8/20s) [A] | C (1kHz) [pF] |
|----------|---------------|--------------|---------------|------------------------|---------------------|-----------------|------------------|-------------------|-------------------|---------------|
| V130E32 | 130 | 170 | 1.2 | 25 | 220 | 205 | ± 10 | 340 | 200 | 4400 |
| V140E32 | 140 | 180 | 1.2 | 25 | 235 | 220 | ± 10 | 360 | 200 | 4100 |
| V150E32 | 150 | 200 | 1.2 | 25 | 250 | 240 | ± 10 | 395 | 200 | 3700 |
| V175E32 | 175 | 225 | 1.2 | 25 | 270 | 270 | ± 10 | 455 | 200 | 3000 |
| V230E32 | 230 | 300 | 1.2 | 25 | 310 | 360 | ± 10 | 595 | 200 | 2500 |
| V250E32 | 250 | 320 | 1.2 | 25 | 340 | 390 | ± 10 | 650 | 200 | 2200 |
| V275E32 | 275 | 350 | 1.2 | 25 | 370 | 430 | ± 10 | 710 | 200 | 2000 |
| V300E32 | 300 | 385 | 1.2 | 25 | 400 | 470 | ± 10 | 775 | 200 | 1900 |
| V320E32 | 320 | 420 | 1.2 | 25 | 440 | 510 | ± 10 | 840 | 200 | 1700 |
| V385E32 | 385 | 505 | 1.2 | 25 | 560 | 620 | ± 10 | 1025 | 200 | 1400 |
| V420E32 | 420 | 560 | 1.2 | 25 | 615 | 680 | ± 10 | 1120 | 200 | 1300 |
| V440E32 | 440 | 585 | 1.2 | 25 | 630 | 715 | ± 10 | 1180 | 200 | 1250 |
| V460E32 | 460 | 615 | 1.2 | 25 | 670 | 750 | ± 10 | 1240 | 200 | 1200 |
| V510E32 | 510 | 670 | 1.2 | 25 | 690 | 820 | ± 10 | 1355 | 200 | 1100 |
| V550E32 | 550 | 745 | 1.2 | 25 | 710 | 910 | ± 10 | 1500 | 200 | 1000 |
| V625E32 | 625 | 825 | 1.2 | 25 | 730 | 1000 | ± 10 | 1650 | 200 | 950 |
| V680E32 | 680 | 895 | 1.2 | 25 | 780 | 1100 | ± 10 | 1815 | 200 | 850 |
| V750E32 | 750 | 1060 | 1.2 | 25 | 820 | 1200 | ± 10 | 2000 | 200 | 800 |

Přepět'ové ochrany - varistory výkonové**E40**

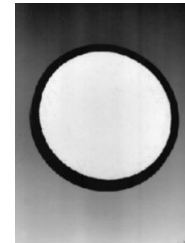
| označení | U _{RMS} [V] | U _{DC} [V] | P _{max} [W] | I _{max} (8/20s) [kA] | W _{max} (2ms) [J] | U _N (1mA) [V] | ΔU _N [%] | U _C (8/20s) [V] | I _C (8/20s) [A] | C (1kHz) [pF] |
|----------|-------------------------|------------------------|-------------------------|-------------------------------------|----------------------------------|--------------------------------|------------------------|----------------------------------|----------------------------------|---------------------|
| V130E40 | 130 | 170 | 1.4 | 40 | 320 | 205 | ±10 | 340 | 300 | 5800 |
| V140E40 | 140 | 180 | 1.4 | 40 | 340 | 220 | ±10 | 360 | 300 | 5400 |
| V150E40 | 150 | 200 | 1.4 | 40 | 370 | 240 | ±10 | 395 | 300 | 5000 |
| V175E40 | 175 | 225 | 1.4 | 40 | 410 | 270 | ±10 | 455 | 300 | 4200 |
| V230E40 | 230 | 300 | 1.4 | 40 | 470 | 360 | ±10 | 595 | 300 | 3400 |
| V250E40 | 250 | 320 | 1.4 | 40 | 505 | 390 | ±10 | 650 | 300 | 3100 |
| V275E40 | 275 | 350 | 1.4 | 40 | 565 | 430 | ±10 | 710 | 300 | 2900 |
| V300E40 | 300 | 385 | 1.4 | 40 | 600 | 470 | ±10 | 775 | 300 | 2700 |
| V320E40 | 320 | 420 | 1.4 | 40 | 655 | 510 | ±10 | 840 | 300 | 2400 |
| V385E40 | 385 | 505 | 1.4 | 40 | 815 | 620 | ±10 | 1025 | 300 | 2000 |
| V420E40 | 420 | 560 | 1.4 | 40 | 930 | 680 | ±10 | 1120 | 300 | 1900 |
| V440E40 | 440 | 585 | 1.4 | 40 | 950 | 715 | ±10 | 1180 | 300 | 1800 |
| V460E40 | 460 | 615 | 1.4 | 40 | 1010 | 750 | ±10 | 1240 | 300 | 1700 |
| V510E40 | 510 | 670 | 1.4 | 40 | 1040 | 820 | ±10 | 1355 | 300 | 1600 |
| V550E40 | 550 | 745 | 1.4 | 40 | 1080 | 910 | ±10 | 1500 | 300 | 1500 |
| V625E40 | 625 | 825 | 1.4 | 40 | 435 | 1100 | ±10 | 1650 | 300 | 1400 |
| V680E40 | 680 | 895 | 1.4 | 40 | 1130 | 1100 | ±10 | 1815 | 300 | 1200 |
| V750E40 | 750 | 1060 | 1.4 | 40 | 1230 | 1200 | ±10 | 2000 | 300 | 1100 |



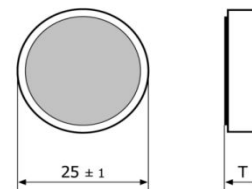
obr. E25, E32, E40

**D25**

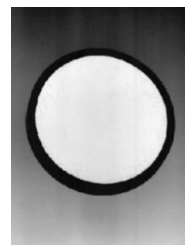
| označení | U _{RMS} [V] | U _{DC} [V] | P _{max} [W] | I _{max} (8/20s) [A] | W _{max} (2ms) [J] | U _N (1mA) [V] | ΔU _N [%] | U _C (8/20s) [V] | I _C (8/20s) [A] | C (1kHz) [pF] | T (±1) [mm] |
|----------|-------------------------|------------------------|-------------------------|------------------------------------|----------------------------------|--------------------------------|------------------------|----------------------------------|----------------------------------|---------------------|-------------------|
| V130D25 | 130 | 170 | 1 | 15000 | 150 | 205 | ±10 | 340 | 150 | 2600 | 1,4 |
| V140D25 | 140 | 180 | 1 | 15000 | 155 | 220 | ±10 | 360 | 150 | 2400 | 1,6 |
| V150D25 | 150 | 200 | 1 | 15000 | 160 | 240 | ±10 | 395 | 150 | 2200 | 2,4 |
| V175D25 | 175 | 225 | 1 | 15000 | 170 | 270 | ±10 | 455 | 150 | 2000 | 2,5 |
| V230D25 | 230 | 300 | 1 | 15000 | 190 | 360 | ±10 | 595 | 150 | 1600 | 2,7 |
| V250D25 | 250 | 320 | 1 | 15000 | 210 | 390 | ±10 | 650 | 150 | 1400 | 3,1 |
| V275D25 | 275 | 350 | 1 | 15000 | 230 | 430 | ±10 | 710 | 150 | 1300 | 2,7 |
| V300D25 | 300 | 385 | 1 | 15000 | 240 | 470 | ±10 | 840 | 150 | 1200 | 2,9 |
| V320D25 | 320 | 420 | 1 | 15000 | 275 | 510 | ±10 | 840 | 150 | 1100 | 3,1 |
| V385D25 | 385 | 505 | 1 | 15000 | 320 | 620 | ±10 | 1025 | 150 | 900 | 3,7 |
| V420D25 | 420 | 560 | 1 | 15000 | 360 | 680 | ±10 | 1120 | 150 | 800 | 4,0 |
| V440D25 | 440 | 585 | 1 | 15000 | 380 | 715 | ±10 | 1180 | 150 | 750 | 4,2 |
| V460D25 | 460 | 615 | 1 | 15000 | 390 | 750 | ±10 | 1240 | 150 | 700 | 4,4 |
| V510D25 | 510 | 670 | 1 | 15000 | 410 | 820 | ±10 | 1355 | 150 | 650 | 4,9 |
| V550D25 | 550 | 745 | 1 | 15000 | 425 | 910 | ±10 | 1500 | 150 | 600 | 5,3 |



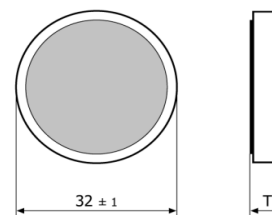
D 25

**D32**

| označení | U _{RMS} [V] | U _{DC} [V] | P _{max} [W] | I _{max} (8/20s) [A] | W _{max} (2ms) [J] | U _N (1mA) [V] | ΔU _N [%] | U _C (8/20s) [V] | I _C (8/20s) [A] | C (1kHz) [pF] | T (±1) [mm] |
|----------|-------------------------|------------------------|-------------------------|------------------------------------|----------------------------------|--------------------------------|------------------------|----------------------------------|----------------------------------|---------------------|-------------------|
| V130D32 | 130 | 170 | 1,2 | 25000 | 220 | 205 | ±10 | 340 | 200 | 4400 | 1,4 |
| V140D32 | 140 | 180 | 1,2 | 25000 | 235 | 220 | ±10 | 360 | 200 | 4100 | 1,6 |
| V150D32 | 150 | 200 | 1,2 | 25000 | 250 | 240 | ±10 | 395 | 200 | 3700 | 2,4 |
| V175D32 | 175 | 225 | 1,2 | 25000 | 270 | 270 | ±10 | 455 | 200 | 3000 | 2,5 |
| V230D32 | 230 | 300 | 1,2 | 25000 | 310 | 360 | ±10 | 595 | 200 | 2500 | 2,7 |
| V250D32 | 250 | 320 | 1,2 | 25000 | 340 | 390 | ±10 | 650 | 200 | 2200 | 3,1 |
| V275D32 | 275 | 350 | 1,2 | 25000 | 370 | 430 | ±10 | 710 | 200 | 2000 | 2,7 |
| V300D32 | 300 | 385 | 1,2 | 25000 | 400 | 470 | ±10 | 840 | 200 | 1900 | 2,9 |
| V320D32 | 320 | 420 | 1,2 | 25000 | 440 | 510 | ±10 | 840 | 200 | 1700 | 3,1 |
| V385D32 | 385 | 505 | 1,2 | 25000 | 560 | 620 | ±10 | 1025 | 200 | 1400 | 3,7 |
| V420D32 | 420 | 560 | 1,2 | 25000 | 615 | 680 | ±10 | 1120 | 200 | 1300 | 4,0 |
| V440D32 | 440 | 585 | 1,2 | 25000 | 630 | 715 | ±10 | 1180 | 200 | 1250 | 4,2 |
| V460D32 | 460 | 615 | 1,2 | 25000 | 670 | 750 | ±10 | 1240 | 200 | 1200 | 4,4 |
| V510D32 | 510 | 670 | 1,2 | 25000 | 690 | 820 | ±10 | 1355 | 200 | 1100 | 4,9 |
| V550D32 | 550 | 745 | 1,2 | 25000 | 710 | 910 | ±10 | 1500 | 200 | 1000 | 5,3 |
| V625D32 | 625 | 825 | 1,2 | 25000 | 730 | 1000 | ±10 | 1650 | 200 | 950 | 6,0 |
| V680D32 | 680 | 895 | 1,2 | 25000 | 780 | 1100 | ±10 | 1815 | 200 | 850 | 6,6 |
| V750D32 | 750 | 1060 | 1,2 | 25000 | 820 | 1200 | ±10 | 2000 | 200 | 800 | 7,2 |
| V1100D32 | 1100 | 1465 | 1,2 | 25000 | 1200 | 1800 | ±10 | 2970 | 200 | 600 | 10,6 |

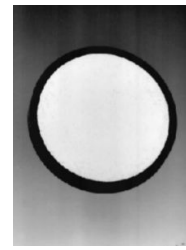


D 32

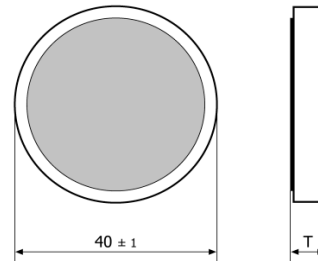


Přepět'ové ochrany - varistory výkonové**D40**

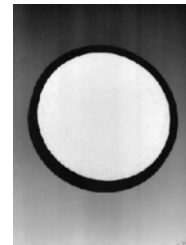
| označení | U_{RMS} [V] | U_{DC} [V] | P_{max} [W] | I_{max} (8/20s) [A] | W_{max} (2ms) [J] | U_N (1mA) [V] | ΔU_N [%] | U_C (8/20s) [V] | I_C (8/20s) [A] | C (1kHz) [pF] | T (± 1) [mm] |
|----------|---------------|--------------|---------------|-----------------------|---------------------|-----------------|------------------|-------------------|-------------------|---------------|--------------------|
| V130D40 | 130 | 170 | 1,4 | 40000 | 320 | 205 | ± 10 | 340 | 300 | 5800 | 1,4 |
| V140D40 | 140 | 180 | 1,4 | 40000 | 340 | 220 | ± 10 | 360 | 300 | 5400 | 1,6 |
| V150D40 | 150 | 200 | 1,4 | 40000 | 370 | 240 | ± 10 | 395 | 300 | 5000 | 2,4 |
| V175D40 | 175 | 225 | 1,4 | 40000 | 410 | 270 | ± 10 | 455 | 300 | 4200 | 2,5 |
| V230D40 | 230 | 300 | 1,4 | 40000 | 470 | 360 | ± 10 | 595 | 300 | 3400 | 2,7 |
| V250D40 | 250 | 320 | 1,4 | 40000 | 505 | 390 | ± 10 | 650 | 300 | 3100 | 3,1 |
| V275D40 | 275 | 350 | 1,4 | 40000 | 565 | 430 | ± 10 | 710 | 300 | 2900 | 2,7 |
| V300D40 | 300 | 385 | 1,4 | 40000 | 600 | 470 | ± 10 | 840 | 300 | 2700 | 2,9 |
| V320D40 | 320 | 420 | 1,4 | 40000 | 655 | 510 | ± 10 | 840 | 300 | 2400 | 3,1 |
| V385D40 | 385 | 505 | 1,4 | 40000 | 815 | 620 | ± 10 | 1025 | 300 | 2000 | 3,7 |
| V420D40 | 420 | 560 | 1,4 | 40000 | 930 | 680 | ± 10 | 1120 | 300 | 1900 | 4,0 |
| V440D40 | 440 | 585 | 1,4 | 40000 | 950 | 715 | ± 10 | 1180 | 300 | 1800 | 4,2 |
| V460D40 | 460 | 615 | 1,4 | 40000 | 1010 | 750 | ± 10 | 1240 | 300 | 1700 | 4,4 |
| V510D40 | 510 | 670 | 1,4 | 40000 | 1040 | 820 | ± 10 | 1355 | 300 | 1600 | 4,9 |
| V550D40 | 550 | 745 | 1,4 | 40000 | 1080 | 910 | ± 10 | 1500 | 300 | 1500 | 5,3 |
| V625D40 | 625 | 825 | 1,4 | 40000 | 1100 | 1000 | ± 10 | 1650 | 300 | 1400 | 6,0 |
| V680D40 | 680 | 895 | 1,4 | 40000 | 1130 | 1100 | ± 10 | 1815 | 300 | 1200 | 6,6 |
| V750D40 | 750 | 1060 | 1,4 | 40000 | 1230 | 1200 | ± 10 | 2000 | 300 | 1100 | 7,2 |
| V1100D40 | 1100 | 1465 | 1,4 | 40000 | 1850 | 1800 | ± 10 | 2970 | 300 | 800 | 10,6 |



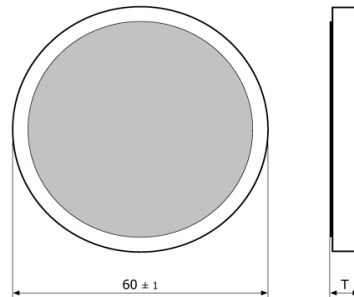
D 40

**D60**

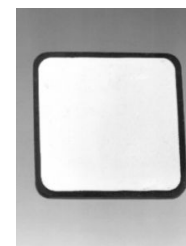
| označení | U_{RMS} [V] | U_{DC} [V] | P_{max} [W] | I_{max} (8/20s) [A] | W_{max} (2ms) [J] | U_N (1mA) [V] | ΔU_N [%] | U_C (8/20s) [V] | I_C (8/20s) [A] | C (1kHz) [pF] | T (± 1) [mm] |
|----------|---------------|--------------|---------------|-----------------------|---------------------|-----------------|------------------|-------------------|-------------------|---------------|--------------------|
| V275D60 | 275 | 350 | 1,6 | 70000 | 870 | 430 | ± 10 | 710 | 500 | 6800 | 2,7 |
| V300D60 | 300 | 385 | 1,6 | 70000 | 950 | 470 | ± 10 | 840 | 500 | 6300 | 2,9 |
| V320D60 | 320 | 420 | 1,6 | 70000 | 1050 | 510 | ± 10 | 840 | 500 | 5800 | 3,1 |
| V385D60 | 385 | 505 | 1,6 | 70000 | 1250 | 620 | ± 10 | 1025 | 500 | 4800 | 3,7 |
| V420D60 | 420 | 560 | 1,6 | 70000 | 1500 | 680 | ± 10 | 1120 | 500 | 2500 | 4,0 |
| V440D60 | 440 | 585 | 1,6 | 70000 | 1550 | 715 | ± 10 | 1180 | 500 | 4300 | 4,2 |
| V460D60 | 460 | 615 | 1,6 | 70000 | 1600 | 750 | ± 10 | 1240 | 500 | 4100 | 4,4 |
| V510D60 | 510 | 670 | 1,6 | 70000 | 1650 | 820 | ± 10 | 1355 | 500 | 4800 | 4,9 |
| V550D60 | 550 | 745 | 1,6 | 70000 | 1700 | 910 | ± 10 | 1500 | 500 | 3500 | 5,3 |
| V625D60 | 625 | 825 | 1,6 | 70000 | 1750 | 1000 | ± 10 | 1650 | 500 | 3200 | 6,0 |
| V680D60 | 680 | 895 | 1,6 | 70000 | 1800 | 1100 | ± 10 | 1815 | 500 | 2800 | 6,6 |
| V750D60 | 750 | 1060 | 1,6 | 70000 | 2000 | 1200 | ± 10 | 2000 | 500 | 2600 | 7,2 |
| V1100D60 | 1100 | 1465 | 1,6 | 70000 | 3000 | 1800 | ± 10 | 2970 | 500 | 1800 | 10,6 |



D 60

**S40**

| označení | U_{RMS} [V] | U_{DC} [V] | P_{max} [W] | I_{max} (8/20s) [A] | W_{max} (2ms) [J] | U_N (1mA) [V] | ΔU_N [%] | U_C (8/20s) [V] | I_C (8/20s) [A] | C (1kHz) [pF] | T (± 1) [mm] |
|----------|---------------|--------------|---------------|-----------------------|---------------------|-----------------|------------------|-------------------|-------------------|---------------|--------------------|
| V130S40 | 130 | 170 | 1,4 | 40000 | 320 | 205 | ± 10 | 340 | 300 | 5800 | 1,4 |
| V140S40 | 140 | 180 | 1,4 | 40000 | 340 | 220 | ± 10 | 360 | 300 | 5400 | 1,6 |
| V150S40 | 150 | 200 | 1,4 | 40000 | 370 | 240 | ± 10 | 395 | 300 | 5000 | 2,4 |
| V175S40 | 175 | 225 | 1,4 | 40000 | 410 | 270 | ± 10 | 455 | 300 | 4200 | 2,5 |
| V230S40 | 230 | 300 | 1,4 | 40000 | 470 | 360 | ± 10 | 595 | 300 | 3400 | 2,7 |
| V250S40 | 250 | 320 | 1,4 | 40000 | 505 | 390 | ± 10 | 650 | 300 | 3100 | 3,1 |
| V275S40 | 275 | 350 | 1,4 | 40000 | 565 | 430 | ± 10 | 710 | 300 | 2900 | 2,7 |
| V300S40 | 300 | 385 | 1,4 | 40000 | 600 | 470 | ± 10 | 840 | 300 | 2700 | 2,9 |
| V320S40 | 320 | 420 | 1,4 | 40000 | 655 | 510 | ± 10 | 840 | 300 | 2400 | 3,1 |
| V385S40 | 385 | 505 | 1,4 | 40000 | 815 | 620 | ± 10 | 1025 | 300 | 2000 | 3,7 |
| V420S40 | 420 | 560 | 1,4 | 40000 | 930 | 680 | ± 10 | 1120 | 300 | 1900 | 4,0 |
| V440S40 | 440 | 585 | 1,4 | 40000 | 950 | 715 | ± 10 | 1180 | 300 | 1800 | 4,2 |
| V460S40 | 460 | 615 | 1,4 | 40000 | 1010 | 750 | ± 10 | 1240 | 300 | 1700 | 4,4 |
| V510S40 | 510 | 670 | 1,4 | 40000 | 1040 | 820 | ± 10 | 1355 | 300 | 1600 | 4,9 |
| V550S40 | 550 | 745 | 1,4 | 40000 | 1080 | 910 | ± 10 | 1500 | 300 | 1500 | 5,3 |
| V625S40 | 625 | 825 | 1,4 | 40000 | 1100 | 1000 | ± 10 | 1650 | 300 | 1400 | 6,0 |
| V680S40 | 680 | 895 | 1,4 | 40000 | 1130 | 1100 | ± 10 | 1815 | 300 | 1200 | 6,6 |
| V750S40 | 750 | 1060 | 1,4 | 40000 | 1230 | 1200 | ± 10 | 2000 | 300 | 1100 | 7,2 |
| V1100S40 | 1100 | 1465 | 1,4 | 40000 | 1850 | 1800 | ± 10 | 2970 | 300 | 800 | 10,6 |



S 40

